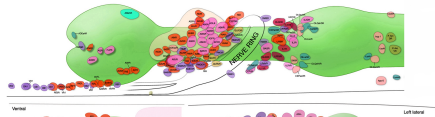
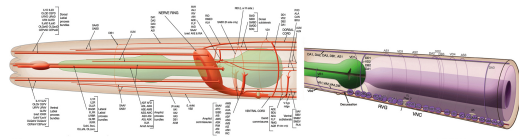
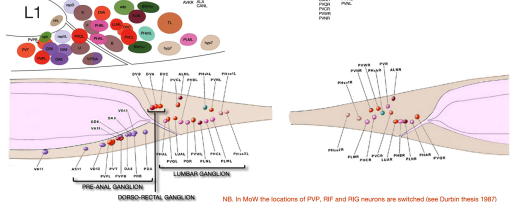
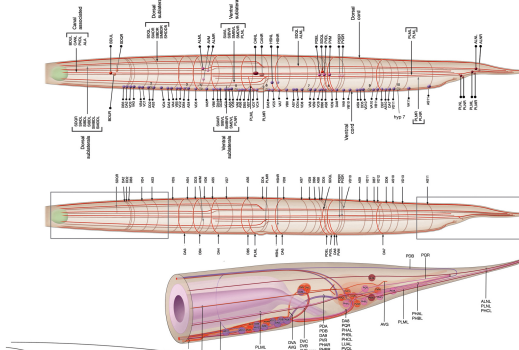
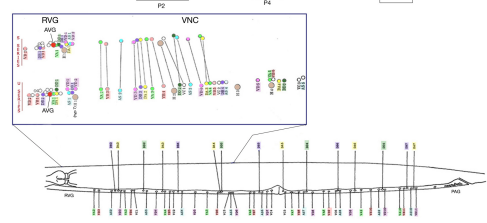
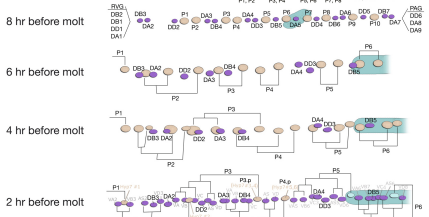


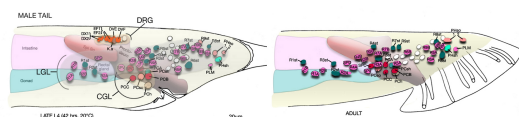
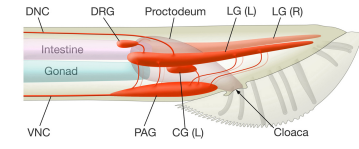
GANGLIA and NERVE CORDS of *Caenorhabditis elegans*



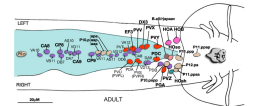
Newly hatched L1 (ventral view)



MALE TAIL GANGLIA



LATERAL view, left side. Nuclei in left Lateral S.G. (L), left dorsal C.G. (L) and the dorsal root ganglion DRG, shown in L4 figure only. C.G. nuclear position largely invariant; those of lateral ganglia more variable. Unlabeled nuclei belong to neurons or hermaphrodite cell groups. (adapted from Sulston et al., 1982, Fig. 12)



©2019 The Open Source Animal Atlas Project. This content is licensed under a Creative Commons Attribution 4.0 International License. Adapted from Sulston et al., 1982, Fig. 12