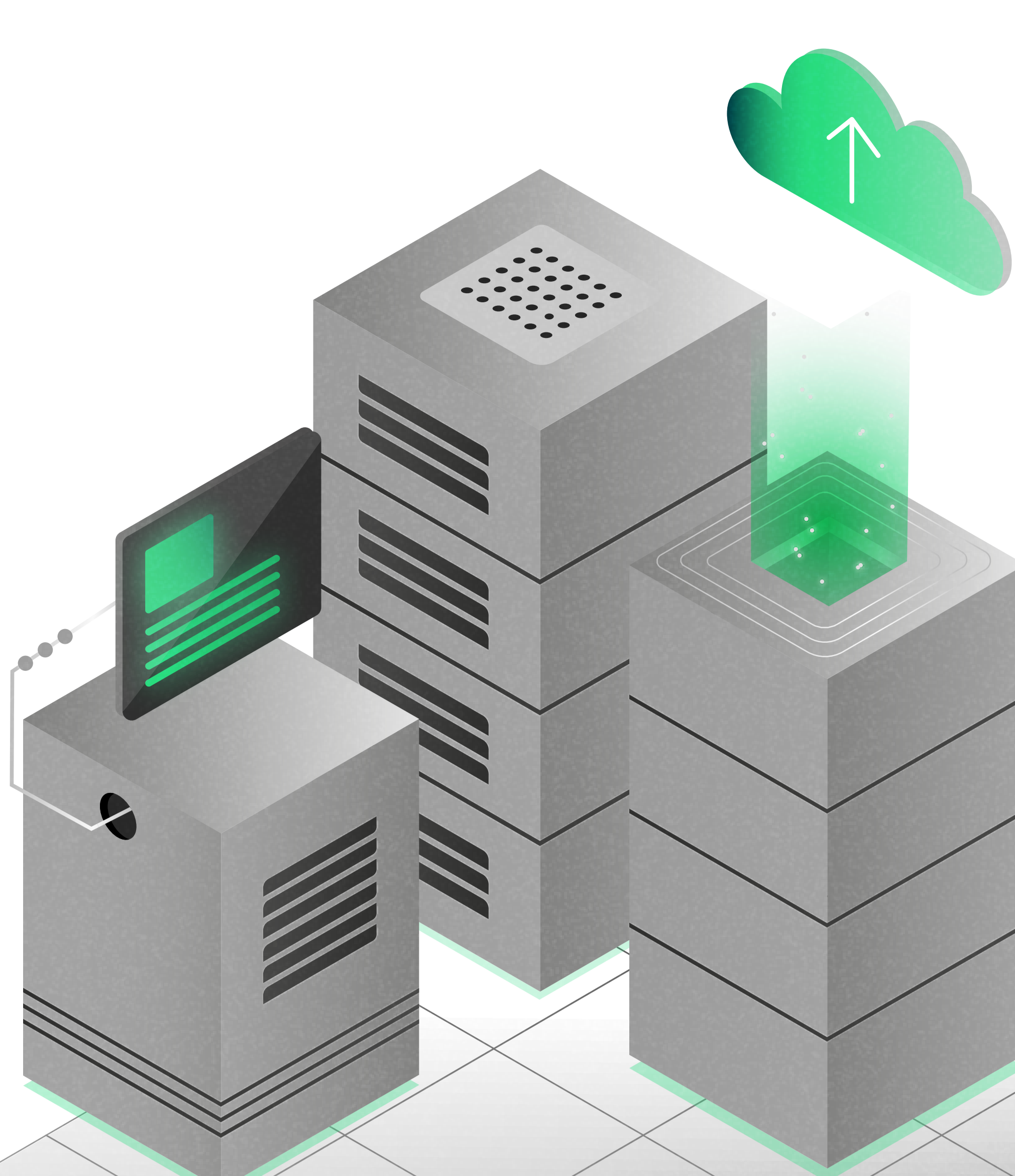


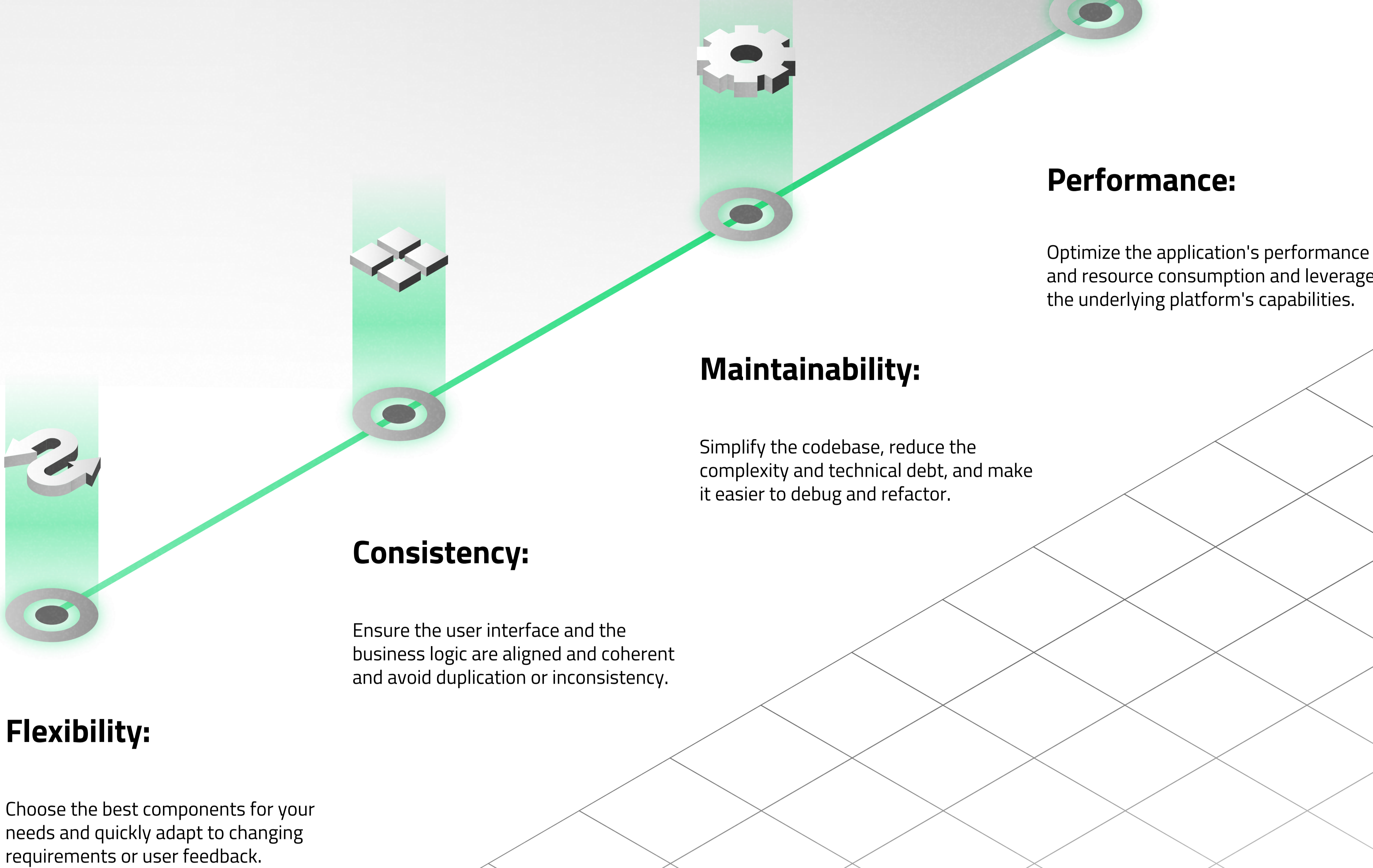
## 5 Tips for Building Scalable and Maintainable Applications



### What is Composable Architecture?

Composable Architecture is a software development approach focusing on building applications from independent, reusable components that can be combined, replaced, and customized to create different features and experiences forming complex systems. They can also be tested in isolation or integration, making ensuring quality and reliability easier. Composable Architecture enables developers to create scalable, reliable, testable applications adaptable to changing requirements and environments.

### Composable Architecture has many benefits, such as:



### How to Ace Application Building With Composable Architecture



#### 1 Use the right technologies for each layer.

- > Select specific tools for different layers of your system.
- > Don't neglect the importance of the decision or orchestration layer
- > Consider the organization of software functionality into separate modules capable of independent operation

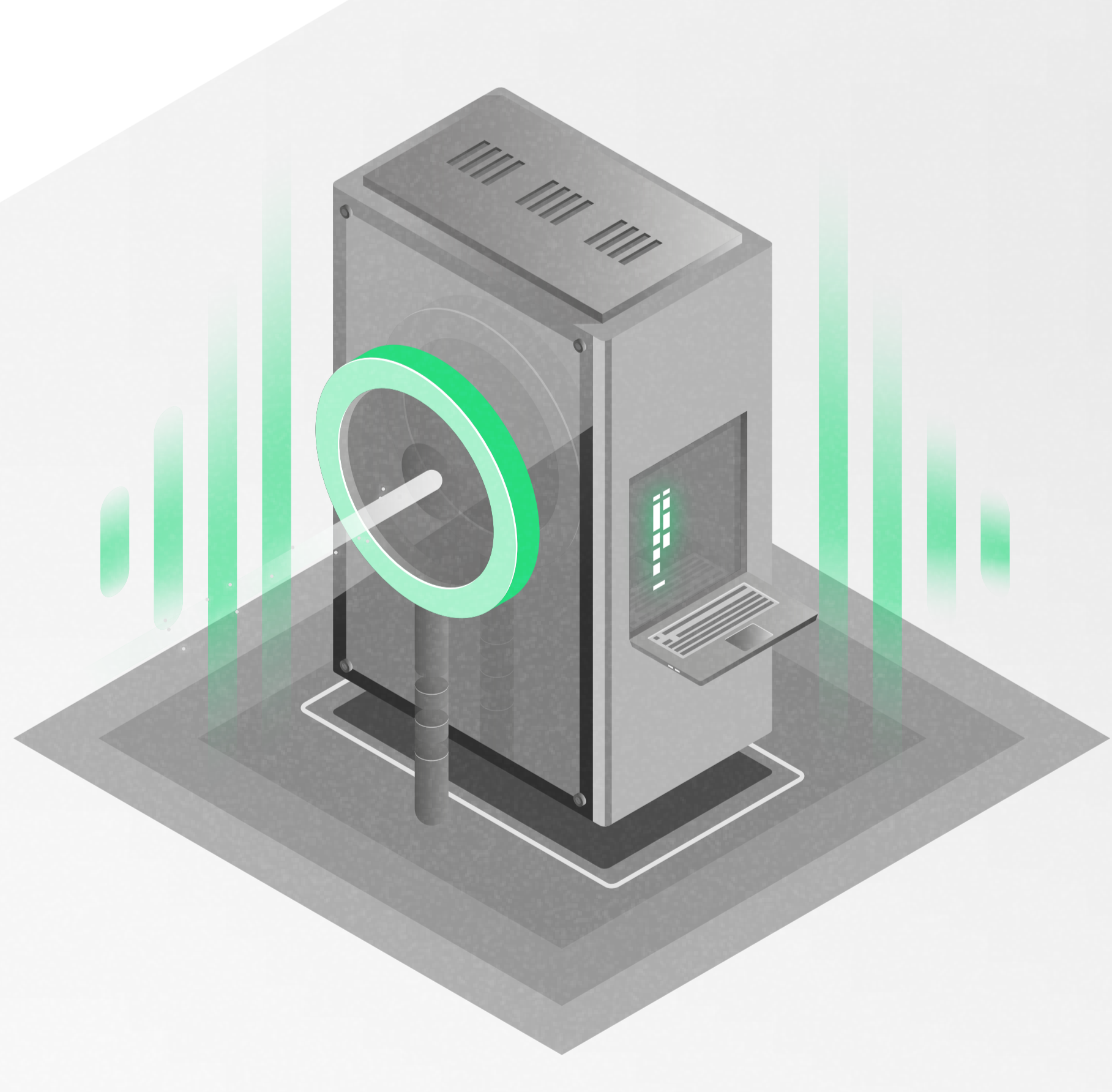
#### 2 Balance composability with business relevance.

- > Implement composability, keeping the business context in mind.
- > Ensure your software landscape supports your business strategy.
- > Involve business stakeholders in the decision-making process.



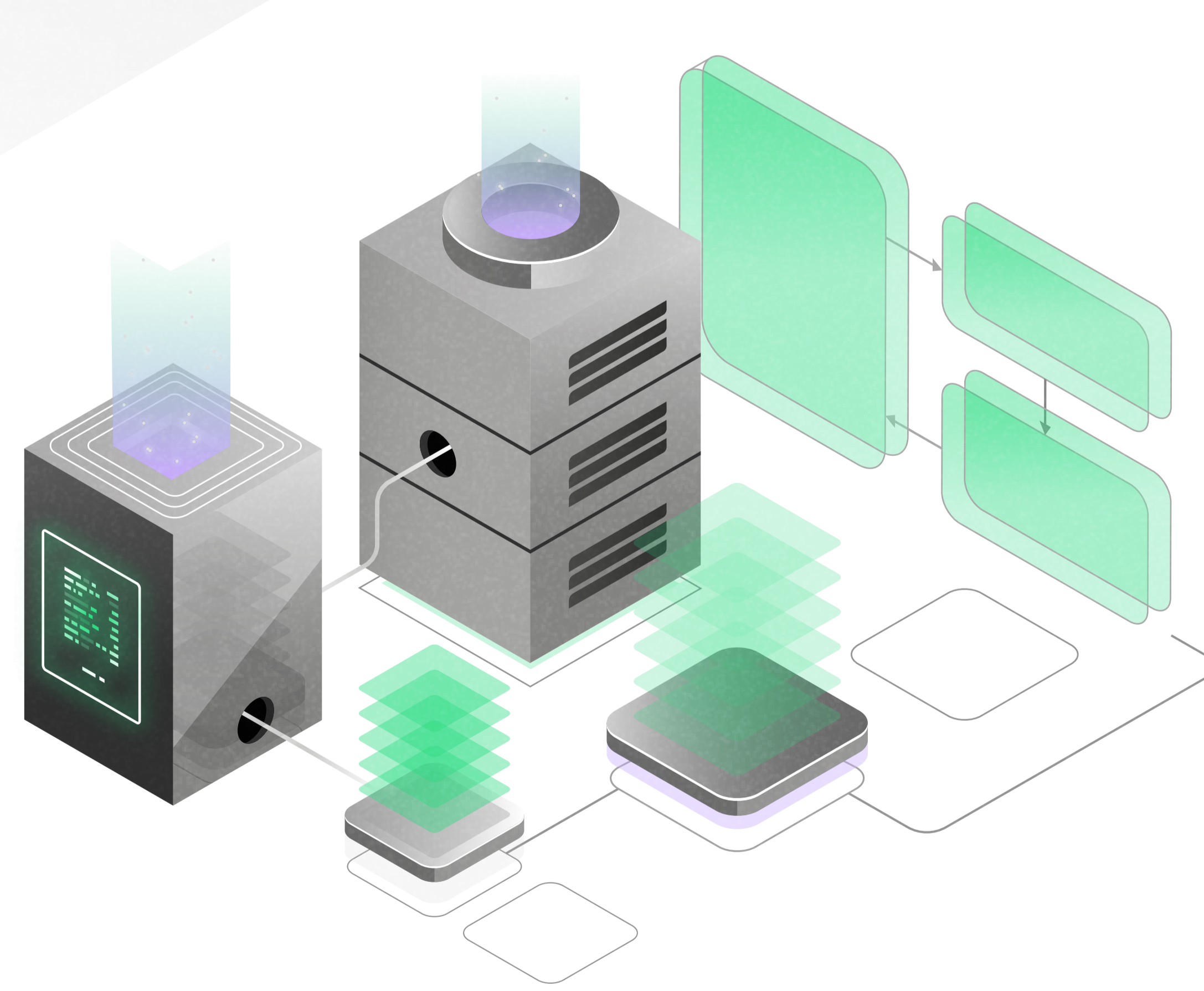
#### 3 Embrace incremental progress.

- > Align CA with MACH (Microservices, API-first, Cloud-native, and Headless) principles.
- > Remember, composability does not require rebuilding the entire stack.
- > Utilize libraries or open-source design systems to reduce costs and deliver value-added features.



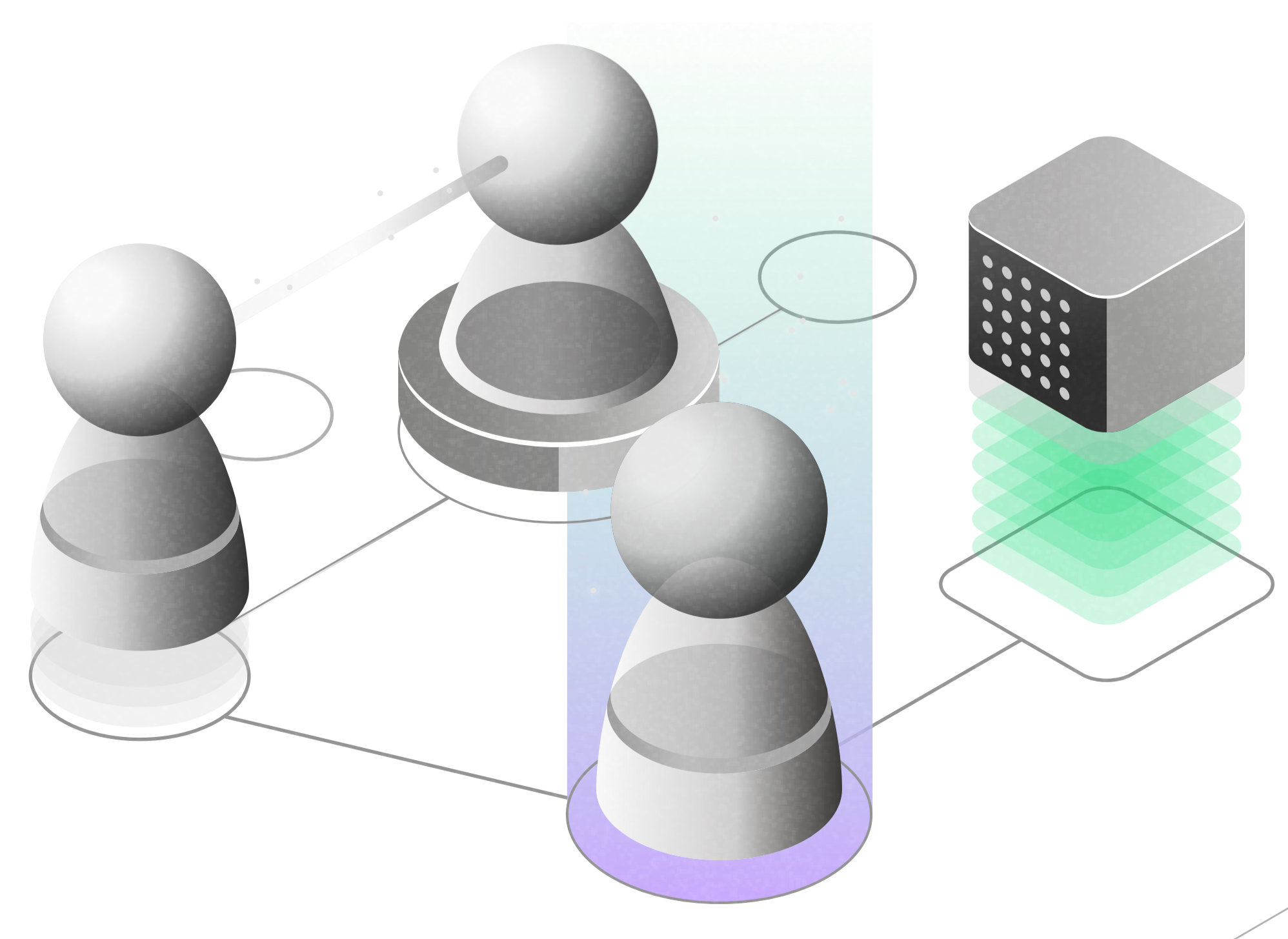
#### 4 Master the signal and slot mechanism.

- > Foster loose coupling and seamless communication between different application segments to enable components to interact harmoniously without direct dependencies.
- > Explore opportunities of signals and slots and ways to customize this powerful communication mechanism.
- > Stay updated with best practices to ensure your composable architecture remains robust and adaptable.



#### 5 Prioritize collaboration.

- > Foster a closer collaboration between business and technical experts.
- > Shift and promote the company's culture towards active communication.
- > Remember that the effectiveness of software architecture depends on the people working with it.



Read More: