

3.43

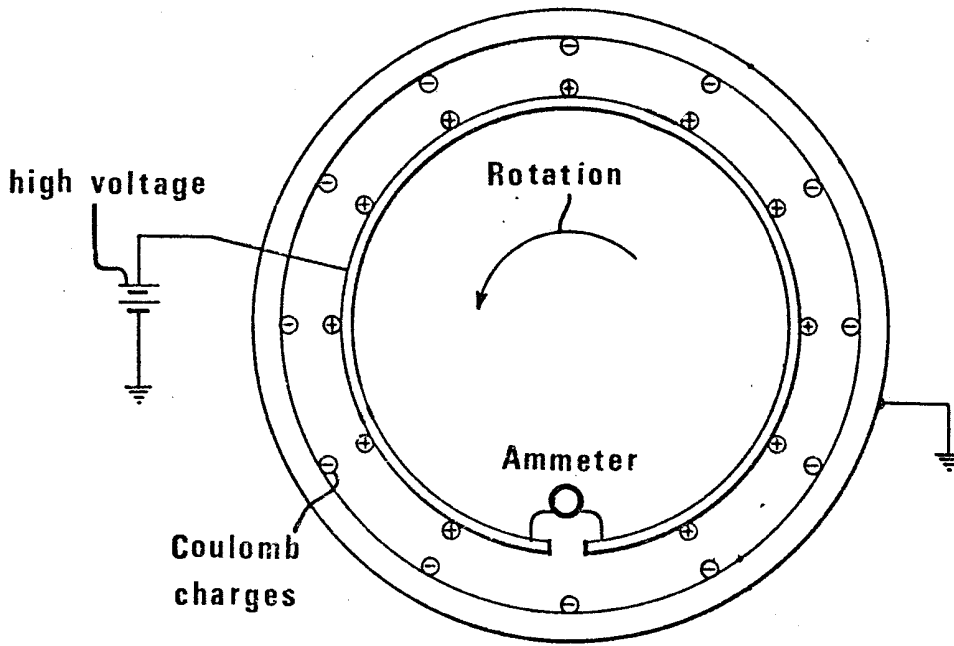


Figure 1 Schematic diagram of the gyroscope

3.44

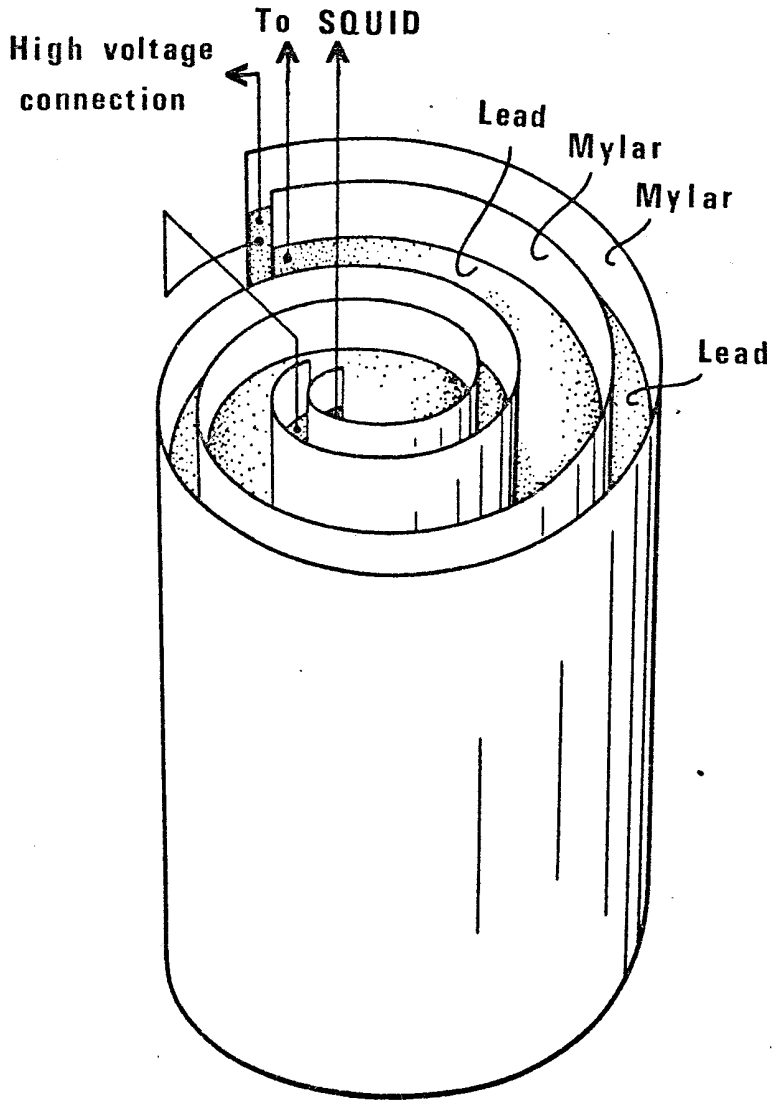


Figure 2a Layout of the windings in the experimental apparatus

3.45

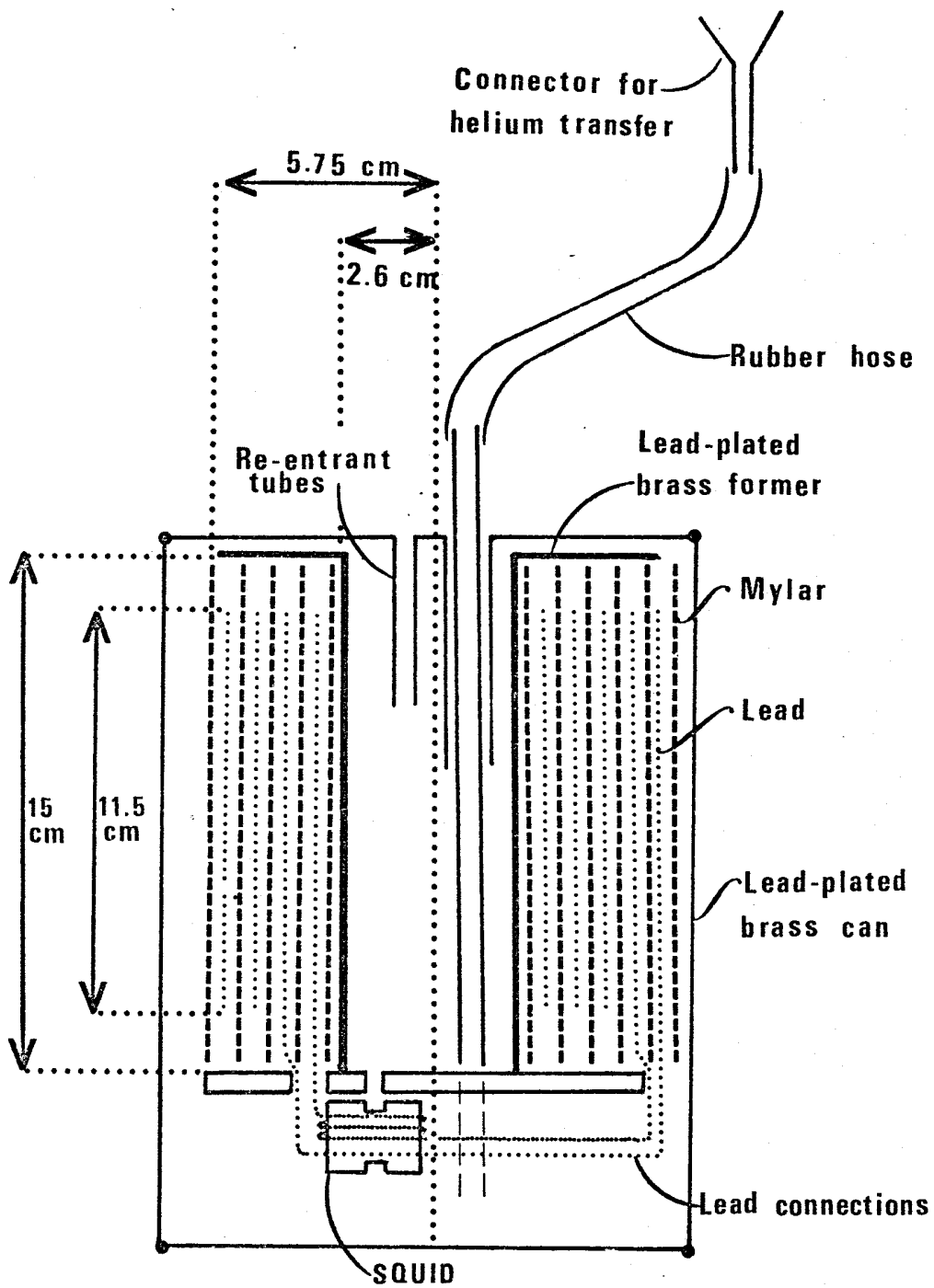


Figure 2b Cross section of the experimental apparatus

3.46

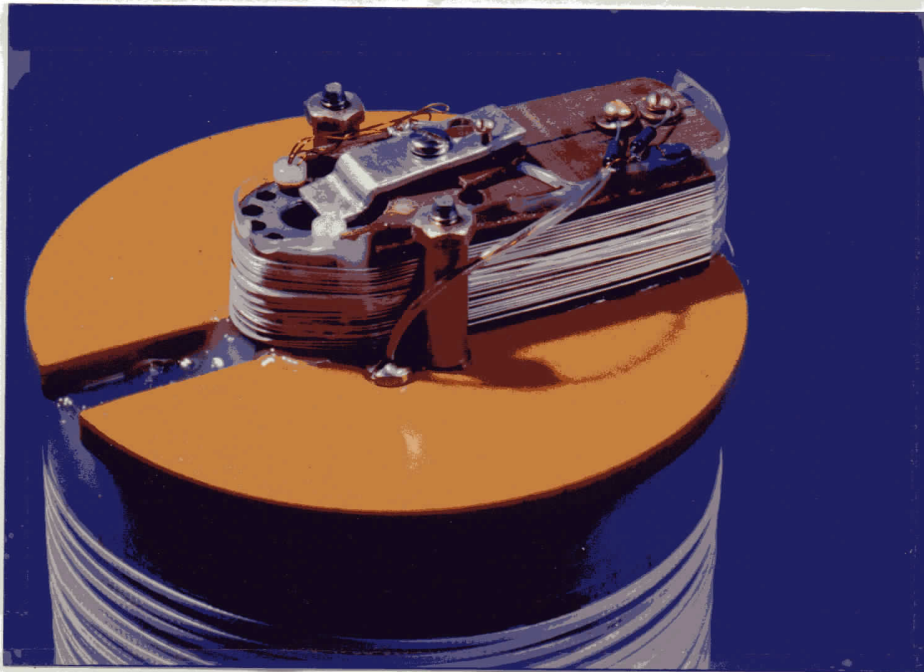
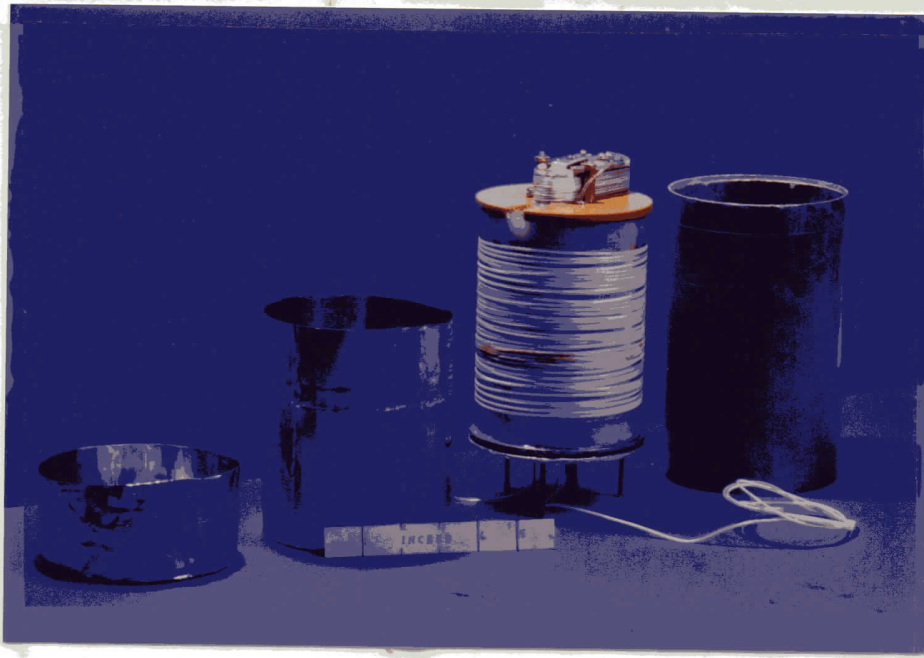


Figure 2c - Photographs of the experimental apparatus.
upper: the windings and the screening cans.
lower: connections at one end and coupling to the SQI

3.47



Figure 2d - Rotating the dewar and experimental apparatus.

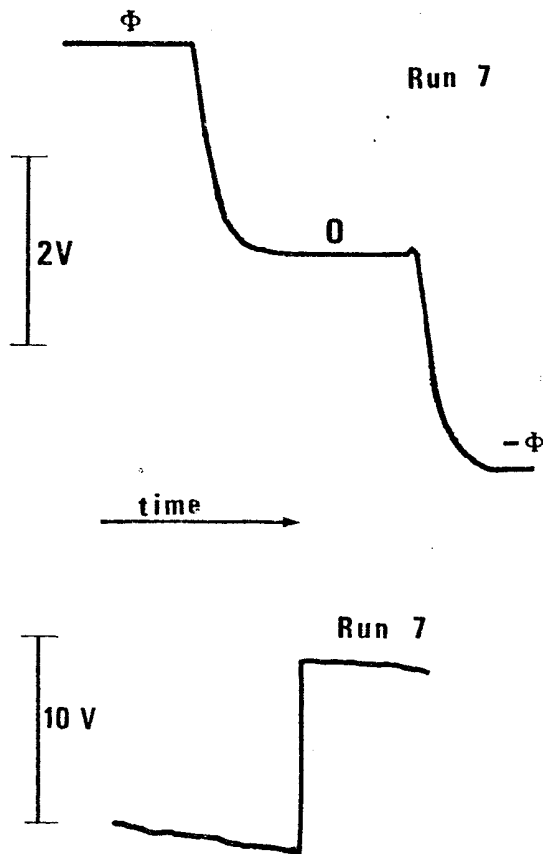


Figure 3 Calibration of the instrument.

Upper: flux $\Phi = 17.4$ flux quanta applied to calibration c

Lower: one flux quantum enters SQUID

3.49

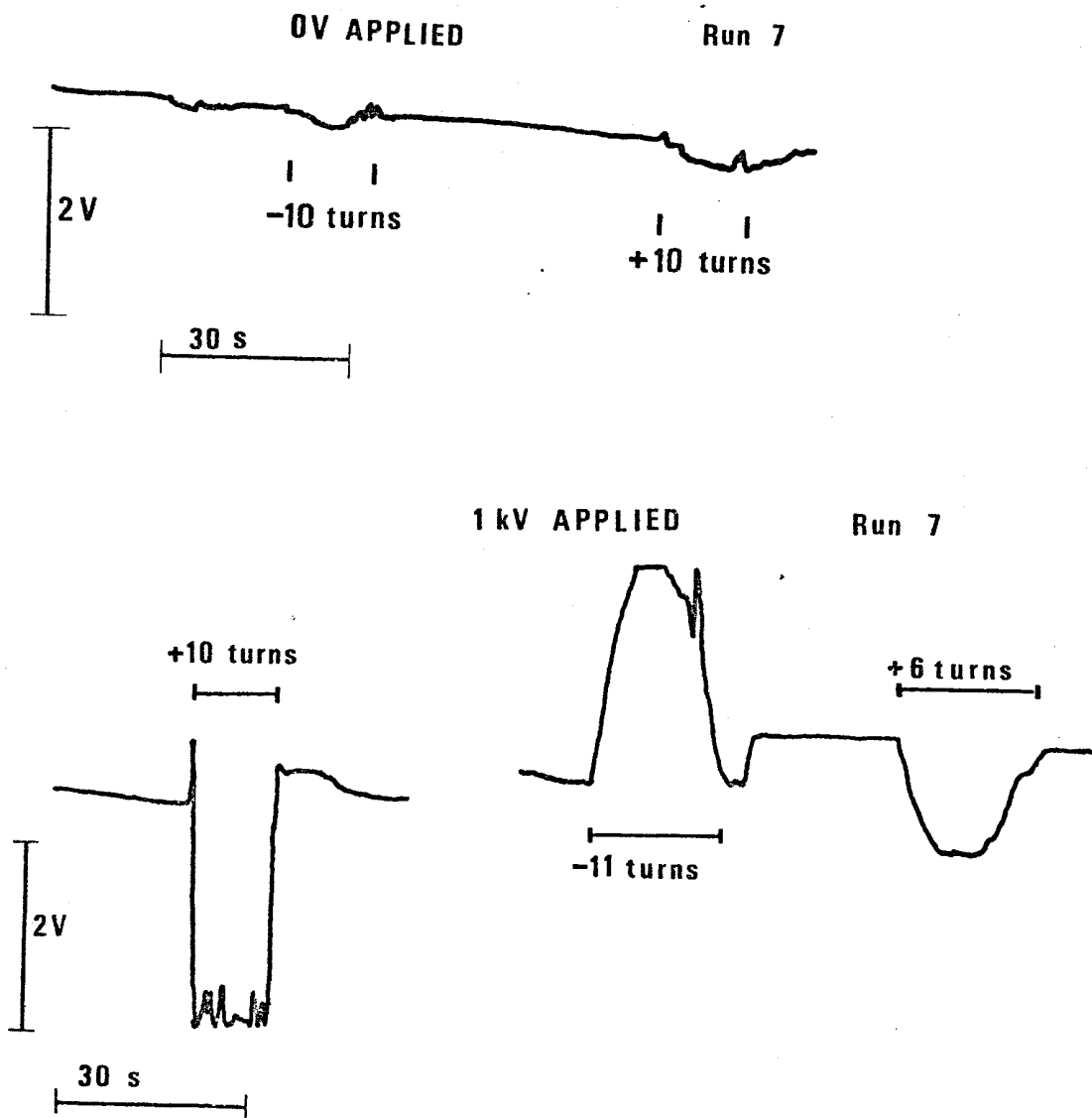


Figure 4 Effect of rotating the instrument.

Upper: no voltage applied

Lower: 1kV applied

3.50

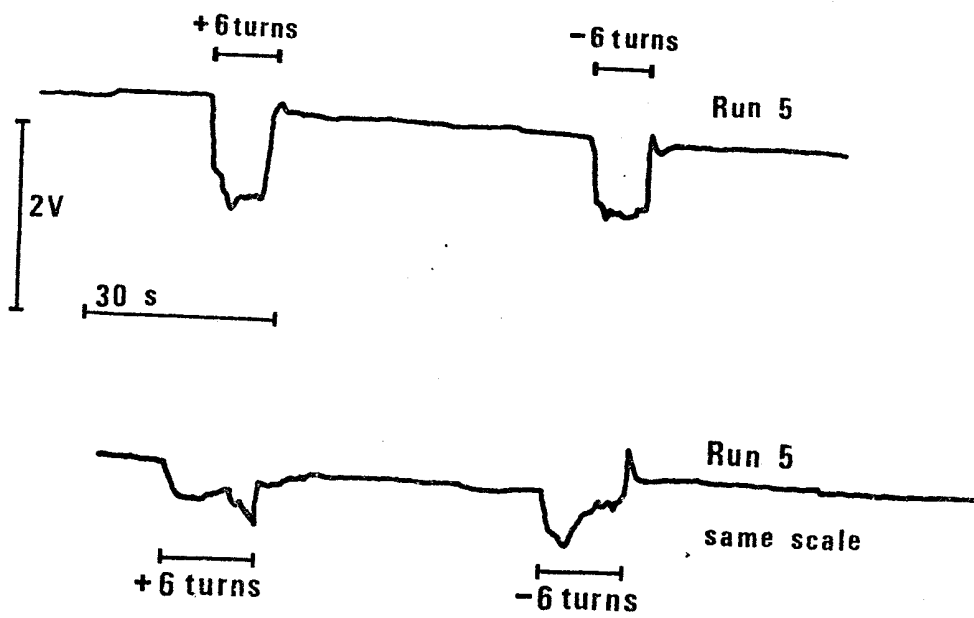


Figure 5 The centrifugal effect

3.51

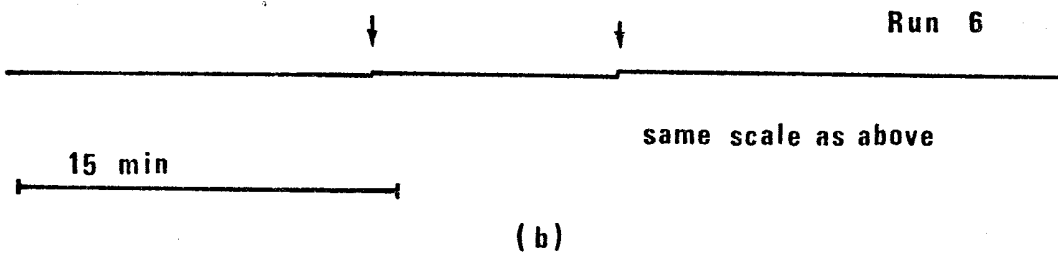
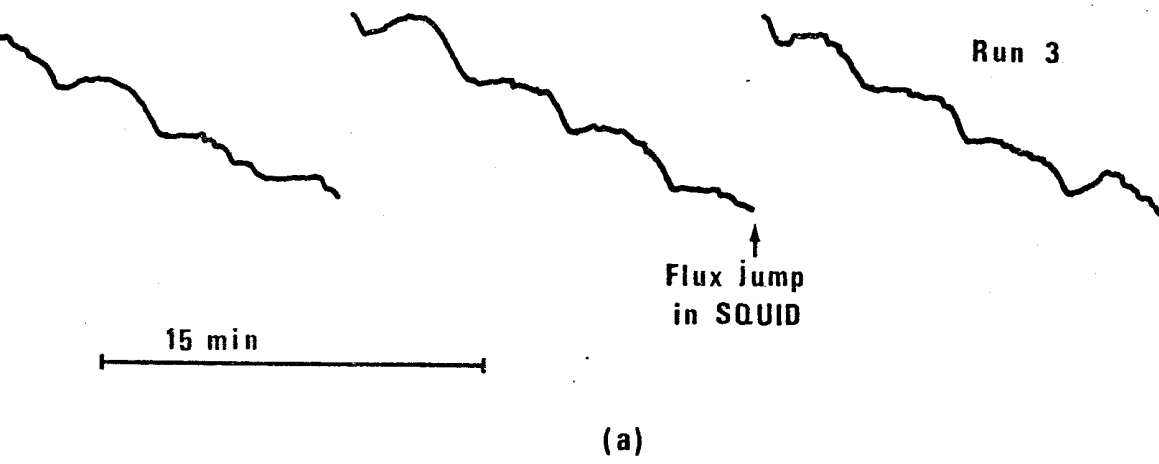


Figure 6 The drift effect

3.52

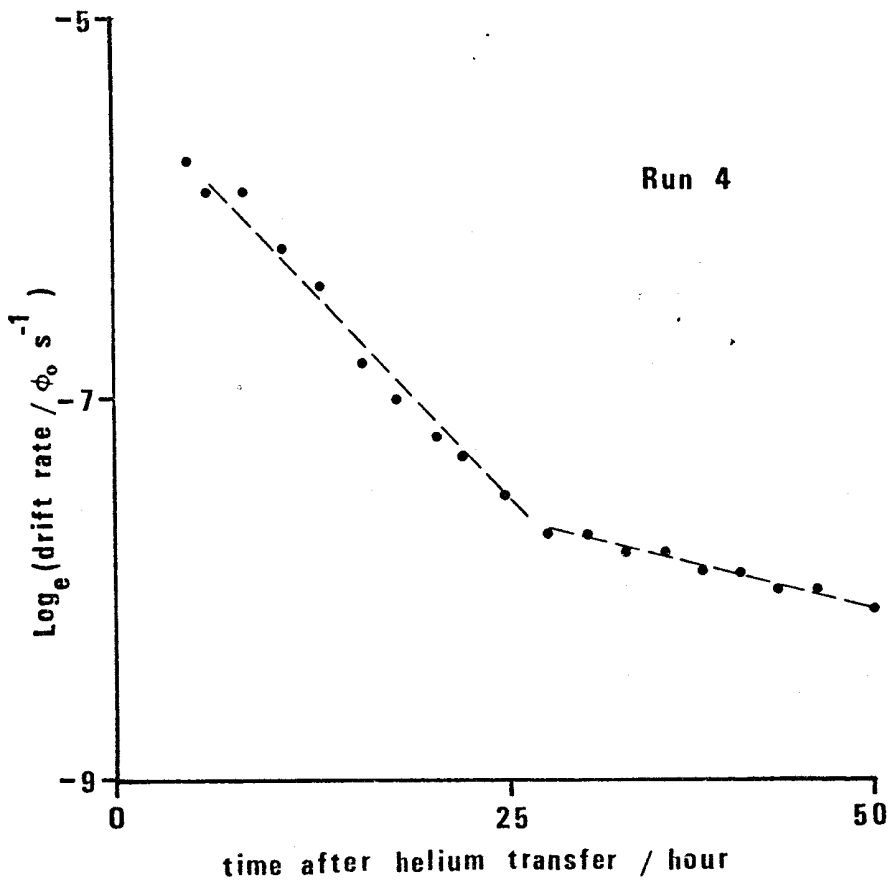
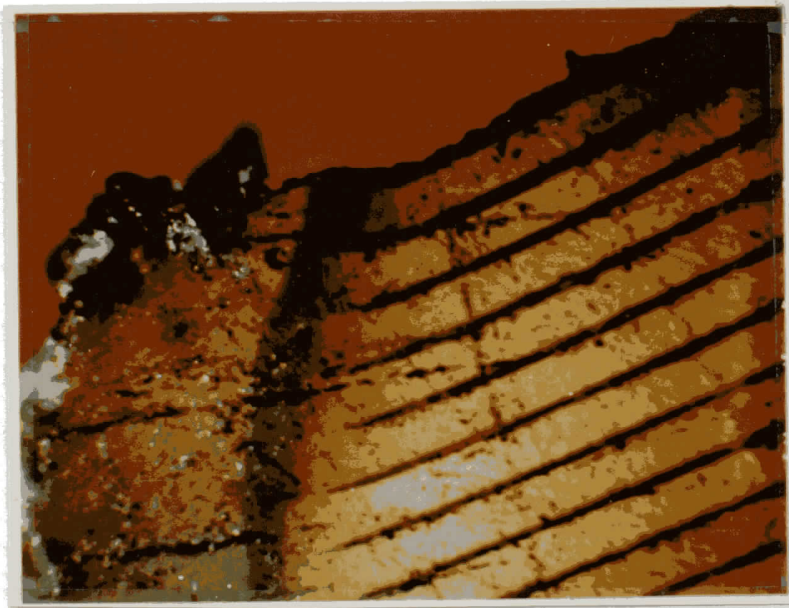


Figure 7 Variation of drift rate with time

3.53



125 μm
┆┆

Figure 8 - Cross section of mylar strips whose ends have been l

3.54

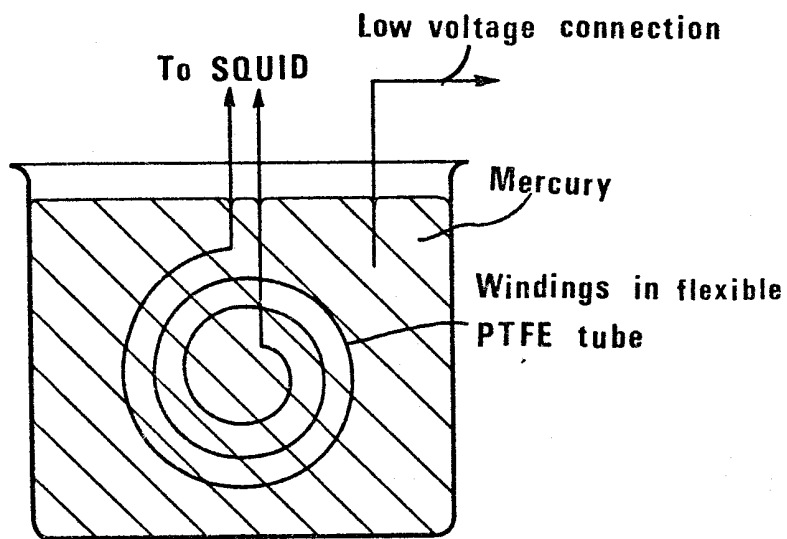


Figure 9 Schematic of the mercury potted rotation device

3.55

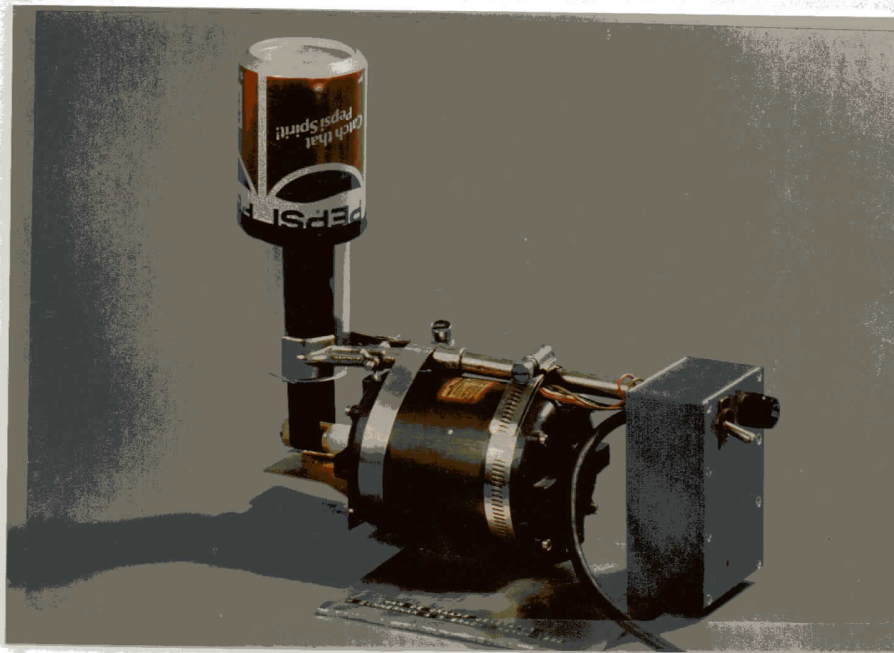


Figure 10 - Homemade Van de Graaff generator used in preliminary experiments.