



ASUS EDUCATION SERIES

UPGRADING
EDUCATION TO
INCREDIBLE



IN AN EVER-CHANGING WORLD
WITHOUT ANSWERS, WE ARE ALL
EXPLORERS.



CONTENT

Trends and Challenge

Upgrade to the Future Learning 4

Why ASUS Education

Education DNA 6

Solution Portfolio 8

Teaching resource 10

Our Education Products

Hybrid learning 14

Esports 40

Always Reliable

Durability 48

Software 50

Security 52

Service 54

Case study 56

Why ASUS

Worldwide achievement 58

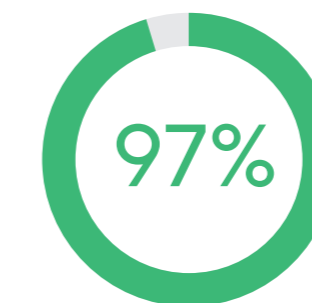
Sustainability 60

Our Partner 62

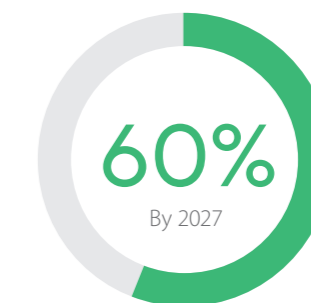


UPGRADE TO THE FUTURE OF LEARNING

Technology has transformed modern classrooms. Teachers, parents and students demand innovative solutions for uninterrupted, safe and secure learning — and ASUS has led from the front. Today's education technology must adapt to teaching that occurs onsite, remotely or as part of a hybrid approach. As a global technology trailblazer, ASUS is committed to providing high-quality solutions that serve the needs of tomorrow's leaders and educators. We're a trusted and reliable learning partner, and a powerful ally for understanding and embracing all aspects of esports as a career choice. In short, ASUS enables educators, students and school partners to upgrade to incredible teaching and learning possibilities by providing comprehensive student-centered solutions — ready to empower academic success.



97% teachers believe that video games can have educational value¹



60% Over half higher education will use hybrid model blending physical & virtual capabilities to deliver institutional mission² By 2027

1. Entertainment Software Association, "Video Games in the 21st Century: The 2019
2. Predicts 2023: Education Will See Consolidation, Competition and Creativity (gartner.com)



WHY ASUS EDUCATION

LEARNING SOLUTIONS YOU CAN RELY ON

ASUS is a prominent provider of technology innovations for education. Our products help students and teachers alike to maximize their learning potential — priming them for an exciting future. Every ASUS education solution is meticulously engineered to meet the needs of the modern classroom, be that at school, at home or on the go. We also offer world-class benefits, including, tailored solutions and a wide range of hardware, software and services — specifically designed to help students and educators get the most out of their technology. When you choose ASUS, you're unlocking access to the very to latest educational tools, resources and technology — empowering students, teachers and parents to get the most out of each and every academic journey.



Tough enough to last

Durable and reliable

- Extreme resilience: Military-grade durability and rugged designs
- Solid foundation: World-leading ASUS motherboards
- Trustworthy platform: ASUS servers as Root-of-Trust resilience



Keeping you safer and healthier

Secure and hygienic protection

- Healthier study: ASUS Antimicrobial Guard
- Eye-friendly display: TÜV-certified low blue light
- Ironclad security: TPM 2.0 chips and Intel® Platform Firmware Resilience



Empower hybrid learning

Mobility and flexibility

- Nonstop productivity: All-day battery life
- Smooth connectivity: Ultrafast WiFi 6E and 4G LTE
- Ultimate mobility: Portable projectors and screens
- Cloud-based learning tools and crystal-clear, AI noise cancelation



Powerful technology

Innovations for collaboration

- Empowering education: Enhanced graphics performance, intuitive tools and features
- Clearer chat and video: AI noise-canceling audio and camera



Less downtime, more learning

IT management and maintenance

- ASUS premium care
- MyASUS software Windows Recovery Environment (WinRE)
- ASUS Corporate Stable Model (CSM) program¹ provides a component-supply guarantee of up to 36 months,



Education with peace of mind

Premium support and service

- World-class support: Backed by ASUS Premium Care
- Seamless service and support: MyASUS software in Windows Recovery Environment (WinRE)

ASUS EDUCATION SOLUTIONS

ASUS is passionate about delivering technology solutions that meet the evolving needs of teachers, parents and students. We offer an expansive portfolio of products and services that help realize the promise of digital learning, including personal computers, monitors, motherboards, graphics cards, routers, and much more.



EMPOWER EVERY PART OF THE SCHOOL



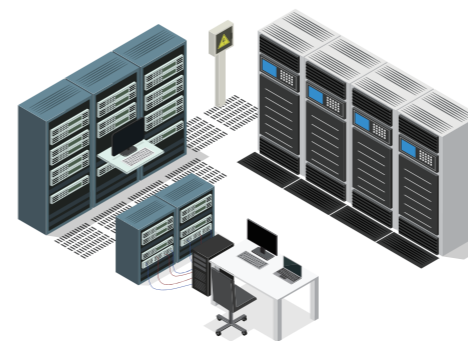
Office



Computer Lab



Distance Learning



Data Center



Modern Classroom

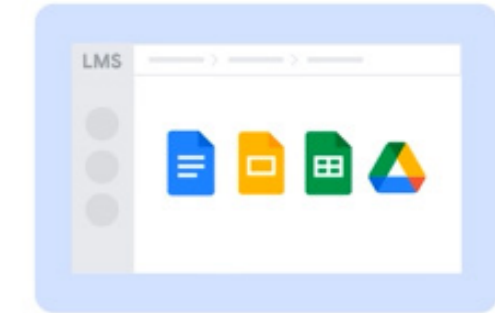
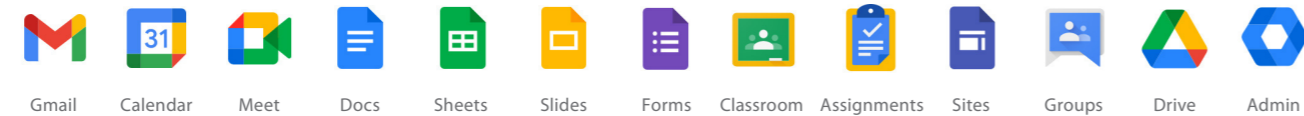


eSports

GOOGLE TEACHING RESOURCES

Elevate education with simple, flexible and secure tools with Google Workspace for Education

To make collaboration easier, streamline instruction and keep your learning environment secure Google Workspace for Education provides flexible, secure, and manageable tools for educators and learners at every age and stage.



Google Classroom

Save time and simplify everyday tasks

- Switch from class to assignment to student in just a few clicks
- Track student progress in your gradebook and export scores to your school's student information system (SIS)
- Keep grading consistent and transparent with rubrics displayed alongside student work

Enhance student learning experiences

- Keep everyone on track with student to-do and teacher to-review pages, and due dates that automatically appear on student calendars when classwork is created
- Upload coursework documents automatically as templates to give each student their own copy of an assignment when it is created

Google Meet

Connect and collaborate with easy-to-use video conferencing

- Join calls from anywhere, on any device — just click and meet with no plugins or downloads needed
- Experience high-quality video and audio across operating systems and devices — even optimized for low bandwidths and dark environments
- Integrates seamlessly with Classroom and other Google Workspace for Education products to make joining and presenting easy

Run classes effectively in a safer learning environment

- Prevent unwanted guests from entering the meeting with safety locks and automatic blocking of anonymous attendees
- Eject people from the meeting and manage requests to join in bulk

Google Assignment

Easily distribute, analyze and mark student work with Assignments for your Learning Management System (LMS)

- Simplify assignment management with user-friendly Google Workspace productivity tools
- Built with the latest Learning Tools Interoperability (LTI) standards for robust security and easy installation in your LMS
- Distribute personalized copies of Google Drive templates and worksheets to students

Examine student work to ensure authenticity

- Compare student work against hundreds of billions of web pages and over 40-million books with originality reports
- Make student-to-student comparisons on your domain-owned repository of past submissions when you sign up for the Teaching and Learning Upgrade or Google Workspace for Education Plus

MICROSOFT TEACHING RESOURCES

Making the transition to remote learning

As schools around the world respond to COVID-19, Microsoft offers remote-learning tools, teaching resources and training that we hope will help schools, educators, students and their families as they navigate their 'new normal'.



Minecraft: Education Edition

Microsoft extends access to Minecraft: Education Edition and resources to support remote learning.



Flipgrid

Flipgrid is social learning for PreK to PhD learners – helping students discuss and showcase what they're learning.



MakeCode

Bring computer science to life for all students with fun projects, immediate results, and both block and text editors for learners at different levels.

Microsoft 365 Education

Empower educators to unlock creativity, promote teamwork, and provide a simple and safe experience in a single, affordable solution built for education.



Outlook



Word



Excel



PowerPoint



OneNote



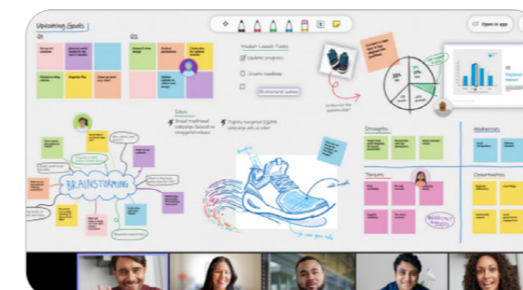
Teams



Publisher

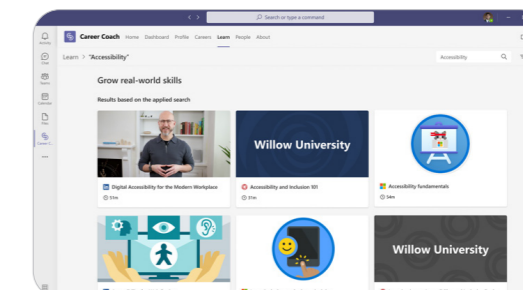


Access



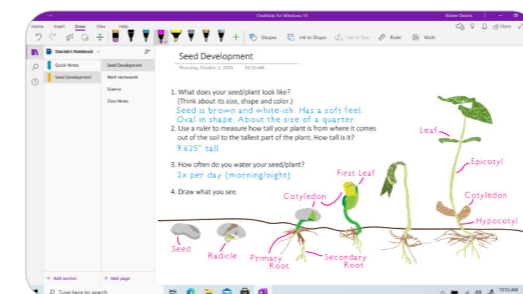
Collaboration and brainstorming with Microsoft Whiteboard

The collaborative digital canvas in Microsoft 365 for effective meetings and engaging learning, facilitating distance learning, run collaborative lessons and maximize learning outcomes with ink, notes, stickers and more.



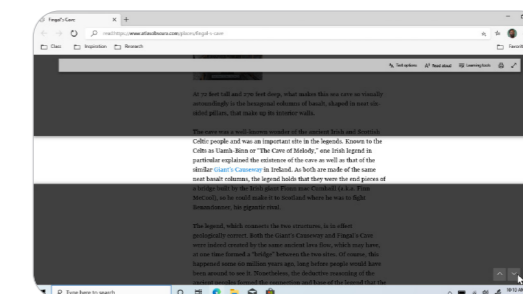
Personalized career guidance with Career Coach

The journey from education to employment isn't always straightforward. Career Coach, a Microsoft Teams app powered by LinkedIn, can help each student discover their unique career path, grow real-world skills, and build their network – all in one place.



Easier classroom organization with OneNote for Education

With a personal workspace for every student, a content library for handouts, and a collaboration space for lessons and creative activities, OneNote for Education empowers students to create their best work.



Make online learning easy, safe and fun with Microsoft Edge

Microsoft Edge offers the most comprehensive set of built-in learning and accessibility tools on the web. Built-in learning tools, like Immersive Reader and Read Aloud, let students listen to content such as podcasts or read information line by line, with Focus mode.

OUR EDUCATION PRODUCTS

EDUCATE RELIABLY — ANYTIME, ANYWHERE

By offering students the ability to learn in a hybrid environment, schools can provide access to quality education regardless of location. Our education devices and products allow students to learn in the classroom, at home or even on the go. The portable, rugged designs of our devices withstand the everyday wear and tear that comes with student life, while powerful performance assures support for the latest software and applications.





Best for K-12



Chromebook CR12 (CR1204C/F)

Learning without limits.

ASUS CR1204 series offers versatile tools and capabilities for K-12 students to learn and for teachers to easily manage. Its rugged and modular design, with replaceable internal parts, ensures a long-lasting product lifespan. Featuring a larger 12.2-inch Corning® Gorilla® Glass screen with a 180° lay-flat and 360°-flippable hinge, it provides flexibility for an enriched educational experience. This fosters the adventurous mindset of modern students, creating an enjoyable and secure learning journey.

- Powered by Intel® Processor N series and up to 16 GB RAM, 128 GB eMMC, WiFi 6E and 4G LTE* for fast connectivity
- 12.2-inch Corning® Gorilla® Glass* touch panel protects against scratches and chips, plus rubber bumper for all-around protection
- MIL-STD 810H US military-grade durability for everyday strength
- 180° lay-flat and 360°-flippable hinge provides adaptability for an enriched educational experiences
- Easy-to-service modular design for easy maintenance and minimized downtime



Chromebook CZ12 (CZ1204C/F)

The rugged, student-centric study mate.

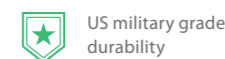
ASUS CZ1204 series is an ideal study companion for K-12 students, offering a portable and robust design that ensures lasting value, empowering students to learn anytime and anywhere. With a 180° lay-flat and 360°-flippable design, and a 12.2-inch 16:10 WUXGA display featuring TÜV-certified technology, the series maximizes the visual experience while prioritizing eye protection. Its long battery life enables seamless use throughout a full day of classes, empowering students to extend their learning further.

- Powered by MediaTek Kompanio 520 and up to 8 GB RAM, 128 GB eMMC, WiFi 6 and 4G LTE* for fast connectivity
- 12.2-inch Corning® Gorilla® Glass* touch panel protects against scratches and chips, plus rubber bumper for all-around protection
- MIL-STD 810H US military-grade durability for everyday strength
- 180° lay-flat and 360°-flippable hinge provides flexibility and enriched educational experiences
- Easy-to-service modular design for easy maintenance and full I/O ports for convenient learning experiences

Best for K-6



ASUS BR1102 Series (BR1102CGA/BR1102FGA/BR1100)



US military grade durability



Easy grip rubber bumper



360° flippable hinge



Modular design

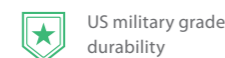
Your smarter, flexible study buddy

ASUS BR1102 Series is the best learning buddy for students with a tough, innovative design made to last. It's packed with clever protective features, including a full rubber bumper, and a tamper-resistant finish, to minimize the chance of accidental damage in the classroom.

- Intel® Processor N-series
- Ultimate ruggedized design
- Up to UFS 2.1 256 GB + PCIe Gen 3 SSD 1 TB
- Modular design for easy maintenance



Chromebook CR11 Series (CR1102CGA/FGA/CR1100)



US military grade durability



All-round rubber bumper



Spill-resistant keyboard



Modular design

The reliable, versatile partner for learning

ASUS Chromebook CR11 Series is the robust, reliable and resilient laptop that makes learning more effective and engaging for students. With its ruggedized features, easy-to-service modular design, zero-touch enrollment, ASUS Antimicrobial Guard treatment, WiFi 6 support and eye-care display, CR11 is the smartest choice for learning.

- Rugged design with military-grade reliability
- Antimicrobial treatment to keep student laptop hygiene
- Modular construction allows key components to be quickly replaced
- Low blue light display certified by TÜV Rheinland



ASUS BR1204 series

Ruggedized excellence for limitless learning

ASUS BR1204 Series stands out as an excellent tool for limitless learning in K-12 education, boasting a robust and modular design that incorporates replaceable internal components, thereby extending its product lifespan. Smartly crafted to withstand accidental drops, ASUS BR1204 Series undergoes rigorous testing, meeting US military-grade standards and exacting in-house ASUS assessments to ensure unwavering durability — making it the perfect choice for modern education.

- Ruggedized design with US military-grade durability
- 12.2-inch, 16:10 touchscreen with Corning® Gorilla® Glass, plus TÜV Rheinland-certified low blue-light emissions
- 360-degree hinge with garaged stylus and world-facing camera for flexible learning
- Up to WiFi 6E, 4G LTE for fast connectivity and AI-noise canceling technology for high-quality remote learning.
- Modular design and uniform screws to minimize downtime

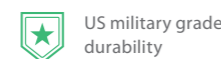
* Corning® Gorilla® Glass touch panel and 4G LTE are optional



Best for K-12



ASUS BR1402 Series (BR1402CGA/BR1402FGA)



US military grade durability



All-round rubber bumper



Spill-resistant keyboard



Modular design

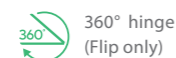
Your dependable, flexible ally

The BR1402 is a great tool for K-12 education, a larger 14" screen with 178° wide view display upgrades your comfort experience. Rugged design mixed with a modular design of replaceable internal parts to create a long-lasting product lifespan. We built it to be drop-proof in mind.

- Up to Intel® Core™ i3-N305
- Ultimate ruggedized design 14" laptop
- Dual camera with stylus (Flip only)
- A modular design for easy maintenance



Chromebook CM14 (CM1402CM2A/FM2A)



360° hinge (Flip only)



ASUS Antimicrobial Guard



Up to 15 hrs battery life



Spill-resistant keyboard

The everyday companion that does more

ASUS Chromebook CM14 Series is made for boosting productivity and having more fun — all day, every day. An efficient MediaTek Kompanio 520 processor and up to 15-hour battery life gives you the freedom to stay productive throughout the day. With speedy performance, robust security and convenient features, ASUS Chromebook CM14 Series is not only perfect for students and teachers — it's ideal for anyone, anytime!

- MediaTek Kompanio 520 processor
- 360hinge with garaged stylus (CM1402F only)
- Face Auto Exposure camera
- Spill-resistant keyboard

Best for Higher Education

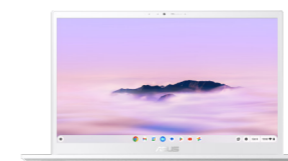


ExpertBook B5 series (B5404/B5604)

Business excellence, anywhere you work

ASUS ExpertBook B5 is the perfect on-the-go companion for forward-thinking professionals. It's an ultralight, AI-ready marvel that combines the latest Intel® Core™ Ultra 7 processor and discrete NVIDIA® graphics, ushering in a new era of productivity — plus a taller 16:10 touchscreen for deeper immersion. With AI-powered features like an intelligent camera and noise cancelation plus and seamless WiFi 7 and 4G connectivity, everyday business is smarter, faster and smoother. ExpertBook B5 equips you for effective, enjoyable work — everywhere you go.

- Up to latest Intel® Core™ Ultra 7 processor for AI workloads
- Up to NVIDIA® RTX2050 discrete graphics for intensive tasks handling
- Dual SO-DIMM up to 64GB DDR5 for easy IT installation and cost-effective upgradeability
- Magnesium-aluminum and pure aluminum chassis with MIL-STD-810H US military grade durability
- 16:10 slim bezel touchscreen display for more vertical workspace



Chromebook Plus CX34

Every experience, stepped up

ASUS Chromebook Plus CX34 is powerful, portable and primed to push productivity further — offering double the speed, double the memory, and double the storage, plus AI-powered Google and Adobe features to do more of what you love. With a stylish, lightweight and durable design, it's the perfect choice for individuals and professionals striving for enhanced productivity. Packed with features to help you achieve more, from a 180°, lay-flat hinge to fast and stable WiFi 6, ASUS Chromebook Plus CX34 is expertly engineered to step up every experience.

- Powered by up to an 12th Gen Intel® Core™ i7 processor with 16 GB of memory, and up to 512 GB SSD or up to 256 GB UFS storage
- Seamless display with Full HD visuals and three-sided NanoEdge design
- FHD webcam ensuring high-quality visuals for online conferences
- First ASUS Chromebook Plus, featuring AI powered apps and video-calling tools



Best for Teacher



ExpertBook B5 series (B5302C/B5302F/B5402C/B5302F/B5602C/B5602F)



Thin and light



long battery



US military-grade durability



AI noise-canceling technology

Power to turn your business world

ASUS ExpertBook B5 series is built for business success in style, with 13.3", 14", and 16" screen options, and an optional stylus and OLED screens for ultimate flexibility. It's set for serious travel with amazing all-day battery life and is engineered with many cutting-edge technologies to improve your productivity.

- Up to Intel vPro® with 13th Gen Intel® Core™ i7 processor
- 13.3", 16" screen sizes with optional OLED
- 360°-flippable design with garaged stylus or clamshell design



Chromebook CX5 Flip (CX5601FBA)



NanoEdge display



16:10 panel



WiFi 6E technology



Quad-speakers certified harman/kardon

Limitless versatility, expansive visuals

The 16-inch ASUS Chromebook Flip CX5 has a new look and features up to 12th Generation Intel® Core™ i7 processor plus WiFi 6E for powerful performance and connectivity. Enjoy incredible performance, connectivity, visuals, audio and cloud-based work and entertainment - all with ASUS Chromebook Flip CX5.

- Powered by up to Intel® Core™ i7 processor with Intel® Iris® X® graphics and 16 GB of memory
- Precision-engineered 360° ErgoLift hinge and many productive modes
- Three-sided NanoEdge display with 16:10 aspect ratio
- FHD webcam with high-quality visuals for videoconferencing

ExpertBook



ExpertBook B1 Series (B1402/B1502)

Primed to perform. Configured for your business.

ASUS ExpertBook B1 is the ideal choice for firms and educational institutions. With a 14" or 15.6" display for vibrant visuals, impressive performance, enterprise-level security, and military-grade durability, ExpertBook B1 is the perfect portable partner to empower your business.

- Up to 12th gen Intel® Core™ i7 processor
- 14" and 15.6" compact screens
- Enterprise-grade security feature
- MIL-STD 810H US military standard



ExpertBook B3 Flip (B3402F)

Maximum flexibility anytime, anywhere

ASUS ExpertBook B3 Flip is built for hybrid working and learning. It is the best companion for teachers and students, and the perfect colleague for businesses. With a flip design, dual cameras, a garaged stylus, and remote working features, studying or working everywhere is no longer a dream.

- Up to 12th gen Intel® Core™ i7 processor
- 360°-flippable design with garaged stylus
- ASUS Anitmicrobial Guard protection
- 4G LTE and WiFi 6E



ExpertBook B9 OLED (B9403)

The epitome of sustainable excellence

Designed with premium magnesium-lithium alloy, ASUS ExpertBook B9 OLED pushes the limits of lightness for ultimate portability and durability. With an environmentally-friendly design, brilliant 16:10 OLED display, AI-powered conferencing for modern work experiences, the latest Intel® Core™ processors (Series 1) and a multitude of enterprise-grade security features, ExpertBook B9 OLED is the perfect partner for executives and business travelers, upping both your green credentials and professionalism — and setting a new benchmark for elite business laptops.

- The world's lightest 14-inch OLED business laptop from 990g
- Up to Intel® Core™ 7 processor (Series 1) employed dual smart-cooling fans
- Thixomolding manufacturing to reduce E-waste by 29% and production time up to 75%
- Sustainable design throughout the product life-cycle with ASUS Carbon Partner Services available
- MIL-STD 810H US military-grade durability

* Fingerprint is optional



Chromebook



Chromebook Detachable CM3 (CM3000)

Versatility, mobility, productivity

ASUS Chromebook Detachable CM3 combines mobility, productivity and the versatility of various modes into one incredible device. It features a unique, stylish aesthetic, and its inventive vertical and horizontal stand design enables the best orientation and viewing angles. Just attach the ergonomic full-size keyboard, and it transforms into a laptop for enhancing productivity.

- Vertical and horizontal flex-angle stand cover
- 10.5" FHD touchscreen with garaged stylus support
- Thin and light design
- Up to 12 hours battery life



Chromebook CX1 Series (CX1400CKA/CX1500CKA)

Get more done every day, from anywhere

ASUS Chromebook CX1 is made for boosting productivity and having more fun while on the move — all day, every day. With smooth performance, WiFi 6 technology for superfast speeds, up to 11-hour battery life, robust security and convenient features, ASUS Chromebook CX1 is not only perfect for students — it's ideal for anyone on the go!

- Up to quad-core Intel® Pentium® processor
- US Military-grade durability
- Dual-band WiFi 6 (802.11 ax)
- Up to 12 hours battery life



Chromebook CX1 (CX1700CKA)

A broader view to get more done

ASUS Chromebook CX1 (CX1700) is made for boosting productivity and multitasking while having more fun — all day, every day. With 17-inch bigger display, speedy performance, up to 17-hour battery life, slim-bezel design, robust security and convenient features, ASUS Chromebook CX1 is perfect for learning or working from anywhere!

- 17-inch display
- Up to quad-core Intel® Pentium® processor
- US Military-grade durability
- Up to 17 hours battery life



Chromebook Plus CM34 Flip (CM3401)

Your secure and capable companion

The 14-inch, 16:10 ASUS Chromebook Plus CM34 Flip offers an exquisite blend of powerful performance and versatility to empower the way you work or study. With a 2x faster AMD Ryzen processor and up to double the memory and storage, edit Google Docs, photos, and videos, while watching your favorite shows in full HD on a 1080p display. Thanks to a 360° ErgoLift hinge, ASUS Chromebook Plus CM34 Flip quickly adapts for use in any mode — and an optional garaged stylus allows for intuitive input when it's time to jot down notes.

- Powered by up to an AMD Ryzen™ 5 7520C processor with 16 GB of memory, with a superfast, large-capacity PCIe® SSD
- 360° ErgoLift design bundled stylus to unleash your creativity and productivity
- FHD webcam ensures high-quality visuals when taking pictures or video conferencing
- 16:10 aspect ratio with three-sided NanoEdge to maximize screen area
- ASUS Chromebook Plus, featuring AI powered apps and video-calling tools

Vivobook



Vivobook S 15 OLED (K3502)

Wow the world with true power

With Intel® Core™ i7 H series processor and a high-capacity 1 TB SSD, and amazing visuals on the world's leading 15.6-inch 2.8K 120 Hz OLED NanoEdge display. It's perfect for entertainment or casual creativity. The fantastic all-new geometric chassis design makes a real style statement, with a choice of three gorgeous new colors.

- Up to 12th Intel® Core™ i7 processor
- Up to 16 GB memory
- Up to 1 TB SSD storage
- Up to 15.6" 3-sided NanoEdge display
- ASUS Antimicrobial Guard



Vivobook 16X OLED (X1603)

Wow the world with smooth power

Make your world shine with ASUS Vivobook 16X, the feature-packed laptop with a brilliant display. Vivobook 16X makes it easy to get things done, anywhere: everything about it has been improved, from its powerful 12th Gen Intel® processor to its 180° lay-flat hinge, modern colors and sleek geometric design. Make a bright new start today with Vivobook 16X!

- Up to 12th Gen Intel® Core™ i7 processor with 16 GB DDR4 3200MHz and 512 PCIe® 3.0 SSD
- Up to 4K NanoEdge OLED display
- ASUS Antimicrobial Guard
- Large 70 Wh battery capacity
- 180° hinge design



Vivobook Go 14 (E1404G)

Go with your productivity!

It's light. It's compact. It's the ASUS Vivobook Go 14, and it's designed to make you productive and keep you entertained wherever you go! With its 180° lay-flat hinge, physical webcam shield and loads of thoughtful design features, Vivobook Go 14 is the laptop that sets you free!

- Up to Intel® Core™ i3-N305 processor with 8GB DDR4 3200MHz and 512 GB PCIe® 3.0 SSD
- Thin and light, 17.9mm thin and 1.3Kg light
- Superb connecting speed, supporting up to WiFi 6E

ProArt



ProArt Studiobook 16 3D OLED (H7604)

Born for creative pros in 3D

Equipped with the world's first glasses-free 3.2K 120Hz 3D OLED display, the workstation also houses a 13th Gen Intel® Core™ i9 HX processor, NVIDIA® GeForce RTX™ 4070 Laptop GPU and vast amounts of memory that supercharges your 3D content creation workflow.

- World-first glasses-free 16" 3.2K 120Hz 3D OLED display
- Unstoppable 13th Gen Intel® Core™ i9-13980HX processor
- Ultra-fast NVIDIA® GeForce RTX™ 4070 graphics
- ASUS Dial for intuitive and precise control over any apps



ProArt Studiobook 16 OLED (H7604)

Born for creative pros

This powerful mobile workstation has an unstoppable 13th Gen Intel® Core™ i9 HX processor, up to NVIDIA® GeForce RTX™ 4070 fast graphics, and a certified color-accurate 3.2K 120 Hz OLED touchscreen that will do full justice to your creative vision.

- Unstoppable 13th Gen Intel® Core™ i9-13980HX processor
- Up to ultra-fast NVIDIA® GeForce RTX™ 4070 graphic
- World-leading 16" 3.2K 120Hz OLED touchscreen
- ASUS Dial for intuitive and precise control over any apps



ProArt Studiobook Pro 16 OLED (W7604)

Born for creative pros

This powerful mobile workstation has an unstoppable 13th Gen Intel® Core™ i9 HX processor, the latest NVIDIA RTX™ professional graphics, and a certified color-accurate 3.2K 120 Hz OLED touchscreen that will do full justice to your creative vision.

- Unstoppable 13th Gen Intel® Core™ i9-13980HX processor
- Latest pro-grade NVIDIA RTX™ Laptop GPU
- World-leading 16" 3.2K 120Hz OLED
- ASUS Dial for intuitive and precise control over any apps touchscreen

AiO PCs



ExpertCenter E5 AiO (E5402WVA)

Smart, secure and set for business

ExpertCenter E5 AiO is versatile and secure for productivity of all types. With a Height-adjustable & dual orientation stand, you can find the perfect viewing angle standing or seated, viewing videos or reading articles.

- Up to 13th gen Intel® Core™ i7 processor
- Height-adjustable stand for personalized viewing angle
- Enterprise-grade security features with Adaptive Lock and TPM 2.0
- Clear and powerful online meeting with AI Camera and AI Noise Canceling technology



ExpertCenter E1 AiO (E1600)

Unwavering versatility. Always ready.

ASUS ExpertCenter E1 AiO is built to be your versatile and productive learning partner. Featuring a 15.6-inch multitouch panel, a quiet fanless design and convenient connectivity, ExpertCenter E1 AiO is ready for every need. It also elevates expectations with an optional uninterruptible power supply (UPS) to safeguard your tasks and data — making ExpertCenter E1 AiO as dependable as it is productive.

- Compact productivity with expansive 15.6" multi-touch screen
- Unique integrated UPS design to protect your data from unstable power currents
- Fanless design for a quiet operation
- Standard VESA mount compatible



ASUS A3 Series AiO (A3202/ A3402)

Beautiful by design. Imagination truly expanded.

ASUS A3202 and A3402 features an up to Intel Core 7 processor for uncompromising computing performance. Its dual-storage design empowers both rapid file access and large capacity, while the dual band WiFi 6 ensures superfast, stable wireless connectivity. The slim-bezel NanoEdge design results in an 86% plus screen-to-body ratio for expansive productivity. This beautiful, broad display benefits from 100% sRGB color gamut and 178° wide-view technology for truly great imagery.

- Up to Intel® Core™ 7 processor for smooth computing
- 23.8" or 21.45" full HD (1920 x 1080) anti-glare panel with 88% or 86% screen to body ratio
- Two-way AI-powered noise cancelation
- Dolby Atmos support to enhance listening experience
- Designed for complete stability and a sleek appearance

Desktops



ExpertCenter D9 Series (D900MD/D900SD)

Maximum productivity, rock-solid reliability

With 13th Gen Intel® Core™ i9 processor and Intel vPro® Enterprise support for enhanced data protection and IT management, the ExpertCenter D9 series delivers exceptional performance and manageability.

- Up to 13th gen Intel® Core™ i9 processor with Intel vPro® Enterprise support
- Up to 128 GB DDR5 memory with 4 DIMM slots
- Up to 4 TB + 4 TB HDD plus SSD storage
- Tool-free chassis design for easy maintenance and upgrade



ExpertCenter D8 Series (D800MDR/D800SDR)

Maximum productivity, rock-solid reliability

Built to perform and easy to manage, ExpertCenter D8 series delivers serious performance with Intel vPro® Essentials with 13th Gen Intel® Core™ i9 processor with Intel vPro Essentials support for out-of-the-box data protection and IT management.

- Up to 13th gen Intel® Pentium® processor with Intel vPro® Essentials support
- Up to 128 GB DDR5 memory with 4 DIMM slots
- Up to 4 TB + 4 TB HDD plus SSD storage
- Tool-free chassis design for easy maintenance and upgrade



ExpertCenter D7 Series (D700TE/D700ME/D700SE)

Secure, reliable, and business-ready

Engineered to be powerful, tough, secure for business, ExpertCenter D7 series is driven by cutting-edge processors, fast memory, high-performance graphics and comprehensive expansion slots to meet all your institution's needs.

- Up to 13th gen Intel® Core™ i9 processor
- Up to 128 GB DDR4 memory with 4 DIMM slots
- Up to 4 TB + 2 TB HDD plus SSD storage
- Tool-free chassis design for easy maintenance and upgrade

Desktops



ExpertCenter D5 Series (D500TE/D500ME/D500SE)

Exceptional small-business value

ExpertCenter D5 series is made to be reliable. With the latest Intel® Core™ processors, comprehensive IO selections, and variety form factors, it's built to become more powerful and versatile as your institution grows.

- Up to 13th gen Intel® Core™ i7 processor
- Up to 64 GB DDR4 memory with 2 DIMM slots
- Up to 4 TB + 2 TB HDD plus SSD storage
- Comprehensive expansion slots and IO selection for upgrade



ProArt Station (PD500TE)

Elevate your imagination

The new ASUS ProArt Station is designed for seamless professional content creation workflows, delivering robust and stable performance for processor-intensive tasks like video editing and 3D modelling. The ISV certification ensures ProArt station works as expected with professional applications.

- Up to 13th Gen Intel® Core™ i9 processor with 128GB DDR4 3200MHz and 4 TB
- PCIe® 4.0 x4 SSD
- Multizone cooling design
- ISV certified
- Lumiwiz® LED indicators

Monitors



ASUS BE24ECSNK

The complete videoconferencing solution

ASUS BE24ECSNK is a Full HD(1920x1080) Zoom® Certified monitor designed for videoconferencing or livestreaming and it features an integrated FHD 2-megapixel webcam, microphone array and stereo speakers. Its 23.8-inch IPS panel provides wide viewing angles and delivers incredibly sharp imagery, and AI Noise-Canceling microphone eliminates background noise to enhance online voice communication. Plus, the front-facing stereo speakers deliver powerful audio so you can hear the other party loud and clear.

- Best for video conferencing and online learning with integrated Full HD webcam, mic array and stereo speakers
- 23.8-inch Full HD(1920x1080) frameless IPS panel with wide viewing angles.
- ASUS AI Noise-Canceling Microphone offers crystal-clear voice communication



ASUS BE27ACSBK

The Complete Videoconferencing Solution

ASUS BE27ACSBK is a WQHD (2560 x 1440) Zoom® Certified monitor designed for videoconferencing or livestreaming and it features an integrated FHD 2-megapixel webcam, microphone array and stereo speakers. Its 27-inch IPS panel provides wide viewing angles and delivers incredibly sharp imagery, and AI Noise-Canceling microphone eliminates background noise to enhance online voice communication. Plus, the front-facing stereo speakers deliver powerful audio so you can hear the other party loud and clear.

- Integrated Full HD webcam, mic array and stereo speakers for video conferencing and online learning
- 27-inch WQHD(2560x1440) frameless IPS panel with wide viewing angles.
- ASUS AI Noise-Canceling Microphone offers crystal-clear voice communication
- Zoom Certified monitor has undergone comprehensive testing and review processes to ensure seamless communication
- Compatible with popular videoconferencing applications such as Microsoft® Teams, Cisco Webex™ and Google Meet™.



ProArt Display OLED PA32DC

World's first OLED monitor with auto calibration*

ProArt Display OLED PA32DC is the world's first OLED monitor with automatic calibration. It also features a built-in motorized flip colorimeter to ensure professional-grade color accuracy. This 31.5-inch 4K HDR monitor offers a cutting-edge OLED panel with pure RGB stripes and 99% DCI-P3 coverage to deliver highly accurate colors that bring out the finest details in your creations. Multiple HDR format support provides creators with the ideal platform for working with fast-moving HDR content. For comfort and convenience, PA32DC includes two stands to cater to any viewing position or work setup.

- 31.5-inch 4K (3840 x 2160) HDR OLED panel with RGB stripes and 99% DCI-P3 color gamut
- Built-in colorimeter supports Self / Auto calibration, as well as Calman and Light Illusion ColourSpace CMS professional hardware calibration software
- True 10-bit color depth and 1,000,000:1 contrast ratio provide the deepest blacks and accurate highlights
- Supports multiple HDR formats, including Dolby Vision®, HLG and HDR10
- Includes two versatile stand options to suit any scenario or setup, along with an elegant metal handle for portability
- Monitor hood helps reduce reflections, and bundled clips allow for easy cable management

* Model availability varies by regions and countries

**Storage includes two up to 4 TB M.2 SSD drives and one up to 2 TB 3.5" HDD. A second 2.5" HDD of up to 2 TB can be optionally fitted by the user for a total HDD capacity of up to 4 TB.

Monitors



ASUS VA27ACFSN

Enhance Your Productivity

ASUS VA27ACFSN is a 27 inch QHD (2560 x 1440) docking monitor that features a frameless IPS panel for wide angle viewing to deliver incredibly sharp imagery and stunning video playback. Stable Internet connection and one-cable docking to your laptop with RJ45 and USB-C connection. Up to 100Hz refresh rate with Adaptive-Sync technology to eliminate tracing and ensure crisp and smooth viewing experience. Its highly ergonomic design with tilt, swivel, pivot and height adjustments along with TÜV Rheinland-certified Flicker-free and Low Blue Light provides a comfortable viewing experience.

- 27-inch QHD (2560 x 1440) resolution with IPS 178° wide viewing angle panel
- Extensive connectivity with HDMI, USB-C, DisplayPort, earphone jack, USB hub and RJ45 LAN port for the most flexibility
- USB-C port allows simple laptop docking for data transmission and video signal to the display, as well as up to 90W charging the laptop via just one cable
- Up to 100Hz refresh rate with Adaptive-Sync technology to eliminate tracing and ensure crisp and smooth viewing experience
- Ergonomic design with tilt, swivel, pivot and height adjustments for a comfortable viewing position
- ASUS Eye Care monitors feature TÜV Rheinland-certified Flicker-free and Low Blue Light technologies to ensure a comfortable viewing experience
- Green sustainability with paper packaging and energy-efficient performance that meets environmental standards



ASUS VA24DQSB

Protect your eyes

ASUS VA24DQSB is a 23.8 inch Full HD monitor that features a frameless IPS panel for wide angle viewing to deliver incredibly sharp imagery and stunning video playback. Up to 75Hz refresh rate with Adaptive-Sync technology to eliminate tracing and ensure crisp and clear video playback. Its highly ergonomic design with tilt, swivel, pivot and height adjustments along with TÜV Rheinland-certified Flicker-free and Low Blue Light provides a comfortable viewing experience.

- 23.8-inch Full HD (1920 x 1080) LED backlight display with IPS 178° wide viewing angle panel
- Up to 75Hz refresh rate with Adaptive-Sync technology to eliminate tracing and ensure crisp and clear video playback
- Extensive connectivity including HDMI, DisplayPort, D-sub and USB hub
- Ergonomic design with +35° ~ -5° tilt, ±180° swivel, ±90° pivot and 130mm height adjustments for a comfortable viewing experience
- ASUS Eye Care monitors feature TÜV Rheinland-certified Flicker-free and Low Blue Light technologies to ensure a comfortable viewing experience
- Supports both Adaptive-Sync with NVIDIA GeForce* graphics cards and FreeSync with AMD Radeon graphics cards *Compatible with NVIDIA GeForce GTX 10 series, GTX 16 series, RTX 20 series and newer graphics cards

Projectors



ZenBeam E2

Stunning visuals, incredible versatility

ASUS ZenBeam E2 wireless mini projector redefines portable entertainment. It features an automatic portrait projection* mode that lets users change the projector's orientation while in use so they can easily enjoy social media content and livestreams on a bigger screen. And there's no need to tinker with settings because the black sidebars are automatically removed as the projected image smoothly transitions from horizontal to vertical orientation.

- Automatic portrait projection mode* makes it ideal for viewing social media content
- Enables up to 100-inch projections and includes auto vertical keystone correction and tripod socket for convenience
- Light source of 300 LED lumens offers up to 30,000-hour lifespan



H1

Experience bright and immersive visuals

With 3000-lumen light output and 125% Rec. 709 and sRGB wide color gamut, ASUS H1 projects bright and crisp imagery at Full HD (1920 x 1080) resolution. A mercury-free RGB LED light source ensures gorgeous, fade-free projections for up to 30,000 hours – which amounts to around 20 years of real-world use, at an average of 4 hours per day. Just fire up H1 to be drawn into immersive adventures from the comfort of your home.

- Bright, Full HD visuals - Powered by a 3000 lumen LED light source
- Ready for next-gen consoles - 120 Hz refresh rate for super smooth gaming
- Luxurious cinematic experiences - Project from 40" to 200Hz, with 125% Rec. 709 and sRGB color gamuts

Mini PCs



Chromebox 4 (CN66)

Perfect for distance learning via Google apps

ASUS Chromebox 4 features a 10th Generation Intel® Core™ or Celeron® processor and DDR4-2666 memory for faster, smoother and more energy-efficient performance. It also supports up to three 4K displays and comes equipped with versatile USB-C® 3.2 Gen 1 and USB 3.2 Gen 2 Type-A ports for fast data transfers, and USB-C also supports power delivery and DisplayPort connections. Offering easy access to Android apps via Google Play, the device lets you enjoy your favorite apps with the power of a mini PC.

ASUS Chromebox 4 provides new and enriching experiences in and out of the classroom. It is simple, secure and has an array of education apps built in so students and teachers can work and learn right out of the box.

- All-new ASUS Chromebox 4 features the power of 10th Generation Intel® Core™ or Celeron® processors.
- Dual HDMI and USB-C®3.2 Gen 1 ports support up to three 4K displays.
- Intel® WiFi 6 provides ultrafast network speeds.



Chromebox 5 (CN67)

Simple, speedy and secure

ASUS Chromebox 5 is powered by a 12th Gen Intel® Core™ i7 processor and includes Intel WiFi 6E AX211 for exceptional wireless performance. It even has a built-in 15 W wireless charger, enabling users to easily charge supported devices by simply placing them on the Chromebox 5's top cover.

It also comes equipped with a versatile Thunderbolt 4 port for speedy data transfers, power delivery, and connections to external displays. Additionally, the device can support up to four 4K displays for gorgeously sharp visuals and powerful productivity. Automatic system updates, well-organized I/O ports, and VESA mount-support make it ideal for the home, office, or school.

- Up to the latest 12th Gen Intel® Core™ i7 processors (28W), Intel® Iris® X® graphics
- Supports PCIe Gen4 x4 M.2 SSD
- Built-in 15W wireless charger

Mini PCs



ExpertCenter (PN64 / PN64-E1)

Flexible ultrapact Mini PC for business and industrial use

ASUS ExpertCenter PN64 is powered by the 13th Gen Intel® Core™ processor featuring a new hybrid processor design. It includes performance-cores (P-cores) dedicated to processing heavy loads and prioritized tasks, as well as efficient-cores (E-cores) catering to background tasks such as web browsing and PowerPoint presentations. This new core design enables PN64 to process multiple tasks simultaneously in the most efficient way possible.

- Powered by the 13th Gen Intel® Core™ processors
- 4 display located in the rear I/O panel including dual HDMI ports
- DDR5-4800 memory support allows your computer to transfer data faster than DDR4
- Support one PCIe Gen4x4 SSD to deliver greater performance and lower latency



ExpertCenter (PN52)

Ultra-compact Mini PC provides flexible, comprehensive solutions

The ASUS ExpertCenter PN52 won the best windows mini pc in 2022! PN52 is the small but powerful compact size PC that tested Military-grade Durability and won Good design award 2022 and ePeat silver certificated. It supports four 4K displays with triple storages that makes it ideal for a wide range of commercial and education uses.

- Powered by the latest AMD Ryzen™ 5000H Series Processor with Radeon™ graphics
- Quad-4K displays support and 8K UHD support**
- Support 7 USB ports, including 2 x Type C ports, and on-board dual HDMI ports

ASUS ExpertCenter PN52 is powered by the latest AMD Ryzen™ 5000H series processor for smooth and powerful multitasking. In PCMark 10 and Cinebench benchmark testing, the Ryzen 5000H delivered a 17.4% boost in overall performance, and up to 23.4% improvement in singlethread computing performance compared to the previous generation processor.



ExpertCenter (PN53)

Ultra-compact Mini PC provides flexible, comprehensive solutions

ExpertCenter PN53, a mini PC that harnesses the power of the latest AMD Ryzen™ 6000 series processor with AMD Radeon™ 600M series graphics. PN53 can be specified with up to a Ryzen 9 processor and it offers a triple-storage design that can accommodate various storage combinations. Two PCIe® Gen 4 M.2 SSDs and DDR5 memory support ensure fast boot-up and app loading times. In addition, PN53 includes cleverly designed cooling features, AI-powered noise-cancellation technology for improved communication, and can support up to one 8K UHD or four 4K display

- Powered by up to the latest AMD Ryzen™ 6000 series processors with Radeon™ 600M series graphics
- DDR5-4800 memory support for superfast data transfers
- Extensive connectivity with up to seven USB ports, two USB 4 Type-C® and two on-board HDMI® ports

Google Meet



ASUS-Google Meet Hardware Kit

Global, Instantly, Effectively.

ASUS ExpertCenter PN64 is powered by the 13th Gen Intel® Core™ processor featuring a new hybrid processor design. It includes performance-cores (P-cores) dedicated to processing heavy loads and prioritized tasks, as well as efficient-cores (E-cores) catering to background tasks such as web browsing and PowerPoint presentations. This new core design enables PN64 to process multiple tasks simultaneously in the most efficient way possible.

- Powered by the Intel® 13th Generation Core™ processors
- 4 display located in the rear I/O panel including dual HDMI ports
- DDR5-4800 memory support allows your computer to transfer data faster than DDR4
- Support one PCIe Gen4x4 SSD to deliver greater performance and lower latency

NUC



NUC 13 Pro Kit

Global, Instantly, Effectively.

ASUS ExpertCenter PN64 is powered by the 13th Gen Intel® Core™ processor featuring a new hybrid processor design. It includes performance-cores (P-cores) dedicated to processing heavy loads and prioritized tasks, as well as efficient-cores (E-cores) catering to background tasks such as web browsing and PowerPoint presentations. This new core design enables PN64 to process multiple tasks simultaneously in the most efficient way possible.

- Powered by the 13th Gen Intel® Core™ processors
- 4 display located in the rear I/O panel including dual HDMI ports
- DDR5-4800 memory support allows your computer to transfer data faster than DDR4
- Support one PCIe Gen4x4 SSD to deliver greater performance and lower latency



NUC 13 Extreme

Global, Instantly, Effectively.

ASUS ExpertCenter PN64 is powered by the 13th Gen Intel® Core™ processor featuring a new hybrid processor design. It includes performance-cores (P-cores) dedicated to processing heavy loads and prioritized tasks, as well as efficient-cores (E-cores) catering to background tasks such as web browsing and PowerPoint presentations. This new core design enables PN64 to process multiple tasks simultaneously in the most efficient way possible.

- Powered by the 13th Gen Intel® Core™ processors
- 4 display located in the rear I/O panel including dual HDMI ports
- DDR5-4800 memory support allows your computer to transfer data faster than DDR4
- Support one PCIe Gen4x4 SSD to deliver greater performance and lower latency

Networking



ZenWiFi XT9

Whole-home coverage, always secure

ASUS ZenWiFi XT9 AX7800 Tri-Band WiFi 6 Mesh WiFi System, covers up to 5700 sq ft & 6+ rooms, supporting commercial-grade network security, parental controls and VPN features, easy setup, AiMesh compatible, 2.5G WAN port

- Ultimate Performance: WiFi 6 tri-band whole-home mesh provides ultrafast speeds of up to 7800 Mbps for your smart home.
- Expanded Coverage: The latest ASUS RangeBoost Plus technology significantly improves WiFi signal range and overall coverage, offering expansive coverage in areas up to 5700 square feet.
- Easy Management: The ASUS Router app with its intuitive interface makes managing your mesh WiFi system simple right from your smartphone.
- Commercial-Grade Security Anywhere – Protect your home network with AiProtection Pro, powered by Trend Micro™. And when away from home, ASUS Instant Guard gives you a one-click sharable secure VPN.



RT-AX59U

AX4200 Dual Band WiFi 6 (802.11ax) AiMesh Router supporting free network security with AiProtection Pro, Safe Browsing, Instant Guard and VPN features, Parental controls, Easy setup, Wall mount

- WiFi for Smart Homes – Ultrafast WiFi 6 router delivering up to 4,200 Mbps speed, with a powerful quad-core CPU for better efficiency to handle more devices
- Aesthetic and Functional Design – An innovative foot stand for both desktops and wall mount, and the ultra-minimalist design can fit into your home or business environments.
- One-Tap Safe Browsing – Block undesirable content with ASUS Safe Browsing, and protect your kids online by filtering explicit content from search results.
- Commercial-Grade Security Anywhere – Protect your home network with AiProtection Pro, powered by Trend Micro™. And when away from home, ASUS Instant Guard gives you a one-click sharable secure VPN.
- Easy Extendable Network – Enjoy seamless roaming with rich, advanced features by adding any AiMesh-compatible router.



RT-AX57

ASUS RT-AX57 (AX3000) Dual Band WiFi 6 Extendable Router, Subscription-free Network Security, Instant Guard, Advanced Parental Controls, Built-in VPN, AiMesh Compatible, Gaming & Streaming, Smart Home

- New-Gen WiFi Standard – Supporting 802.11ax WiFi standard for better efficiency and throughput.
- Ultra-fast WiFi Speed – RT-AX57 supports 1024-QAM for dramatically faster wireless connections. With a total networking speed of about 3000Mbps — 574 Mbps on the 2.4GHz band and 2402 Mbps on the 5GHz band.
- Increase Capacity and Efficiency – Supporting not only MU-MIMO but also OFDMA technique to efficiently allocate channels, communicating with multiple devices simultaneously.
- Commercial-grade Security Anywhere – Protect your home network with AiProtection Classic, powered by Trend Micro™. And when away from home, ASUS Instant Guard gives you a one-click secure VPN.
- Easy Extendable Network – Enjoy seamless roaming with rich, advanced features by adding any AiMesh-compatible router.

Servers



RS720A-E12-RS24U

AMD EPYC™ 9004 dual-processor 2U server that supports up to 24 DIMM, 24 NVMe, nine PCIe® 5.0 slots, two M.2, OCP 3.0, three dual-slot GPUs, and ASUS ASMB11-iKVM

- Read for AI and HPC workloads: Up to three dual-slot GPUs, including NVIDIA A100 and A40, AMD Instinct and Xilinx
- Scale-up storage and expansion design: Up to 24 all-flash NVMe drives on the front panel and nine PCIe 5.0 slots for higher bandwidth and system upgrade
- Advanced air cooling solution: Features enhanced volume air cooling (EVAC) heatsink for processors with higher TDP



RS700-E11-RS12U

1U dual-socket server powered by 4th Gen Intel® Xeon® Scalable Processor that supports 32 DIMMs, 4 PCIe 5.0 slots, 12 NVMe, 1 dual-slot GPU, OCP 3.0, ASUS ASMB11-iKVM

- Flexible networking module design: Optional two 10 Gbps or four 1 Gbps on-board LAN module, and OCP 3.0 module with PCIe 5.0 slot in rear panel for faster connectivity
- Scale-up storage and expansion design: Up to 12 all-flash NVMe drives on the front panel, and 4 PCIe 5.0 slots for higher bandwidth and system upgrade
- Ready for AI and HPC workloads: Supports 1 dual-slot GPU, including Intel Data Center GPU Flex series and NVIDIA A100



RS520A-E12-RS12U

AMD EPYC™ 9004 single-processor 2U server that supports up to 24 DIMM, 12 NVMe, five PCIe® 5.0 slots, two M.2, OCP 3.0, two dual-slot GPUs, and ASUS ASMB11-iKVM

- Air cooling solution: With heatsink achieves lower power-usage effectiveness (PUE) and optimized TCO for data centers for versatile workloads
- Scale-up storage and expansion design: Up to 12 all-flash NVMe drives on the front panel, two drives in the rear panel, and 5 PCIe 5.0 slots for higher bandwidth and system upgrade
- Enhanced IT-infrastructure management: ASUS ASMB11-iKVM remote control with ASPEED AST2600, ASUS Control Center IT management software and hardware-level Root-of-Trust solution

Workstations



ExpertCenter E500 G9

Mainstream workstation delivers professional performance and flexible expandability ideal for a range of applications from design to virtualization. Equipped with the 12th Gen Intel® Core™ processors and ECC memory, plus support for an NVIDIA Quadro® graphics card and independent software vendor (ISV) certification.

- 13th Gen Intel® Core™ i3/i5/i7/i9 Processors and DDR5-4800 ECC memory for professional performance and stability and DDR5-4800 ECC memory for professional performance and stability
- Ready for 2D/3D rendering with support for one NVIDIA® Quadro RTX™
- Dual onboard 2.5GbE ethernet ports for faster high-density, high-bandwidth and low-latency
- Supports Intel WiFi 6 module

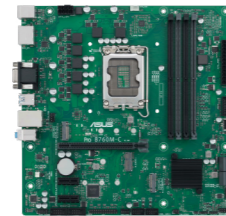


Pro E500 G7

Essential workstation with Intel® Xeon® W-1300 processors, 128GB ECC memory, dual 2.5GbE LAN, dual M.2, support for up to three display, one dual-slot graphics card, USB 3.2 Gen2x2 and ASUS Control Center

- Intel Xeon W-1300 processors and DDR4-3200 ECC memory for professional performance and stability
- Supports up to three independent displays simultaneously via HDMI, DisplayPort, DVI-D and VGA
- Dual onboard 2.5GbE ethernet ports for faster high-density, high-bandwidth and low-latency
- Ultra-fast connectivity with USB 3.2 Gen 2.2 Type-C, USB 3.2 Gen 2 Type A and C and USB 3.2 Gen

Motherboards



Pro B760M-C-CSM

Micro-ATX B760 business motherboard with enhanced security, reliability and manageability and serviceability

- Intel® LGA 1700 socket: Ready for 13th Gen Intel Core™ processors
- ASUS CSM program: A stable motherboard supply, end-of-life notifications, and IT software for business motherboards
- ASUS Control Center Express: Integrated IT monitoring and management software that simplifies enterprise-level system administration
- Enhanced system security: A self-recovering BIOS



Pro WS W790-ACE

Intel® W790 (LGA 4677) CEB workstation motherboard, 12+1+1 DrMOS, PCIe 5.0, M.2 PCIe 4.0 slots, DDR5 R-DIMM, Dual 10G + 2.5G Ethernet, front and Rear USB 3.2 Gen 2x2 Type-C®, SlimSAS, ASUS Control Center Express

- Intel® LGA 4677 socket: Ready for Intel® Xeon® W-3400 & W-2400 processors
- Next-gen performance: 12+1+1 power stages, PCIe 5.0 ready, and a DDR5 R-DIMM speed boost
- Comprehensive thermal design: A massive VRM and chipset heatsink, aluminum M.2 heatsinks, seven 4-pin PWM fan headers and a Water pump+ header
- Latest connectivity: Five PCIe 5.0 slots, two PCIe 4.0 M.2 slots, front and rear USB 3.2 Gen 2x2 Type-C®, Dual 10G + 2.5G Ethernet



PRIME B650M-A-CSM

AMD B650 Micro-ATX motherboard with DDR5, PCIe 5.0 M.2, 2.5Gb Ethernet, DisplayPort/HDMI®/VGA, rear USB 3.2 Gen 2, front USB 3.2 Gen 1 Type-C®

- AMD AM5 Socket: Ready for AMD Ryzen™ 7000 Series Desktop Processors
- Ultrafast Connectivity: M.2 PCIe 5.0, Realtek 2.5Gb Ethernet, USB 3.2 Gen 2 ports, front USB 3.2 Gen 1 Type-C®
- ASUS OptiMem II: Careful routing of traces and vias, plus ground layer optimizations to preserve signal integrity for improved memory overclocking
- ASUS Control Center Express (ACCE) for easier IT endpoint management

Accessories



ProArt Mouse (MD300)

Creativity, dialed up

ProArt Mouse MD300 features an ASUS Dial, a side scroll wheel and three buttons with professional-grade switches that provide tactile mouse clicks, and a high-performance sensor that tracks at up to 4200 dpi for unmatched precision, even when used on a glass surface.



ProArt Backpack (PP2700)

Stay creative on the go

The lightweight and durable ProArt Backpack is a water-repellent rucksack, which features a voluminous main compartment and a unique stain-resistant, antimicrobial coating to securely store your laptop and other valuables, keeping your device hygiene and reduce odors.



ASUS USB-C Mini Dock (DC100)

Small in Size. Big on features.

ASUS USB-C Mini Dock is a compact and lightweight USB-C® dock that gives PCs and laptops additional expandability options. It features a HDMI® with 4K output, USB Type-A and USB-C for up to 10 Gbps transfer speeds, plus up to 100 W power delivery passthrough.



ASUS Pen 2.0 (SA203H)

Note down every creative idea

ASUS Pen 2.0 Microsoft Pen Protocol (MPP) 2.0 technology, requiring just 5 grams of force to trigger the pressure sensor. With a 266 Hz sampling rate and less than 36 ms latency, it provides unbelievably natural writing experiences.

- Unlimited ASUS Dial: Intuitive and faster user experience through rotating and clicking.
- dependent Middle Button: An independent, programmable middle key that is rated to up to 50 million clicks.
- Anywhere sensor: Tracks at up to 4200 dpi for unmatched precision, even when used on a glass surface.
- Quick-Charging: 1-minute charging for up to 8 hours of battery life; a full charge lasts up to 150 days.

- 600D Polyester Coating Water repellent & Anti-Scratch.
- Highly versatile with multiple ways to carry.
- Premium design with hidden pockets and zippers.
- Breathable & Ergonomic Back.

- Go-anywhere Portability: ASUS Mini Dock Plus has a slim 11.35 mm profile and weighs just 48 g, which is compact and lightweight.
- Convenient Charging: Supports 100 W USB PD passthrough, and it also benefits from a traditional USB Type-A port and USB Type-C port that has up to 7.5W output.
- Multitask on up to a 4K display: Connects a display at resolutions of up to 4K, and with refresh rates of up to 144 Hz for 2K video, via HDMI®.
- Fast Data Transfer: Both the USB Type-A and USB-C® on ASUS USB-C Mini Dock support data transfers of up to 10 Gbps, which is up to 4x faster than previous-generation speeds.

- 4096-level pressure sensitivity to create the finest lines and broadest brush strokes.
- Convenient USB-C® charging for a quick 30-minute full charge providing over 140 hours of use.
- Four interchangeable pen tips — 2H, H, HB, B.
- One-click Bluetooth® pairing with multiple shortcuts.

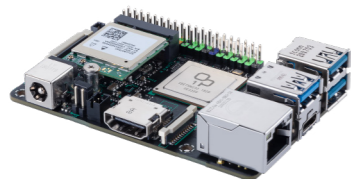
Tinker boards



Tinker Board S/R 2.0

The new and improved Tinker Board S/R 2.0 is a single board computer (SBC) that offers greater durability, better stability and an overall improved user experience for DIY enthusiasts and makers everywhere.

- Improved performance with ARM-based Mali™-T764 GPU.
- Fanless design for energy efficiency.
- Industry-leading Android OS support for system stability and security for Debian and Android.
- Applications include digital signage, gaming, computer vision, gesture recognition, image stabilization and processing, and computational photography.



Tinker Board 2S

An Arm-based Single Board Computer (SBC), uses Arm big. LITTLE™ technology's 64-bit processor offers enhanced computing performance with low power consumption.

- Outstanding performance for IoT devices: Powered by 6-core Rockchip RK3399 system on a chip (SoC) with the updated 64-bit Armv8 architecture, plus multi-core Mali-T860.
- Easy setup tool: Intuitive performance tweaking software with simple three-step initial configuration.
- Pro-grade admin: ASUS IoT Cloud Console for data management and analysis, plus support for firmware over-the-air (FOTA) roll-out.
- Android 10 support: Benefit from better 3D computing performance, support for Android Neural Networks API 1.2 and Adiantum encryption with 5X-better efficiency.



Tinker System 2

The all-new ASUS Tinker System 2 is an ultra-compact powerhouse driven by an Arm® six-core system on a chip (SoC), with the 64-bit Armv8 architecture and multi-core Mali-T860 GPU. With superb performance, installation flexibility, and inherent energy efficiency, Tinker System 2 is the perfect choice for diverse industries and IoT applications — from retail to factory automation and beyond.

- Ultra-compact powerhouse driven by an Arm® six-core system on a chip (SoC), with the 64-bit Armv8 architecture and multi-core Mali-T860 GPU.
- Comprehensive connectivity with a multitude of universal display interfaces, including HDMI-CEC, DisplayPort over USB-C and DSI, for superb flexibility in versatile usage scenarios.
- Solid aluminum chassis ensures stable and efficient thermal performance.
- Fanless design with pre-installed dust covers on the I/O ports, the perfect choice for diverse industries and IoT applications — from retail to factory automation and beyond.

Zenbo Junior II

Zenbo Junior II is our interactive robot packs various perception, cognition and loads of IoT functions. Zenbo Junior II helps you to be more efficient, more interesting and to make more of artificial intelligence in all sorts of everyday situations.

Equipped with

Perception AI

Friendly

Human-robot

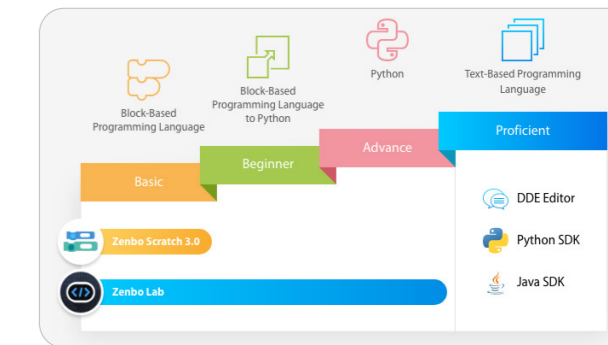
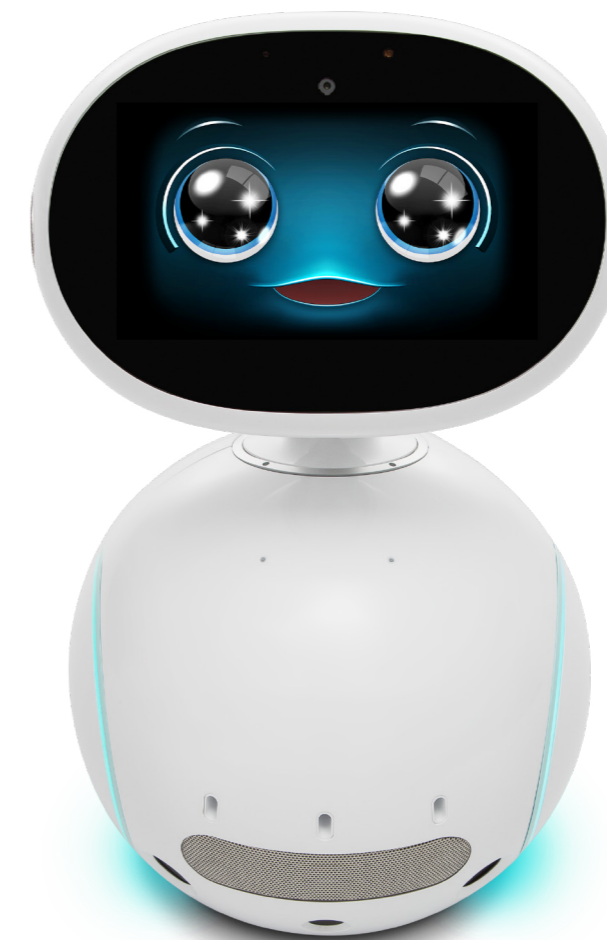
Easy-to-use

development environment

Efficient and

Performance-boosting

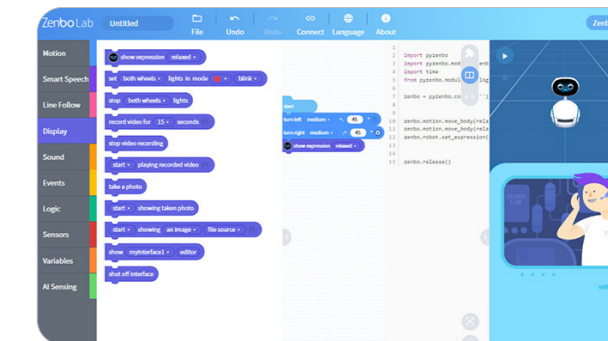
tools



ZENBO

Zenbo Lab inspires AI applications from learning results to implement “Artificial Intelligence Education” and create various robotics applications.

- From block-based programming to text-based coding
- One click to convert to Python code
- Lower the learning curve for text coding



ZENBO SERIES WITH SCRATCH 3.0

Zenbo Junior II becomes an asset for AI learning, connecting to other devices and increasing diversity and ease to use.

- Connect to other devices, such as LEGO® Mindstorm EV3 and BBC micro:bit
- Connect to one or multiple devices at once
- Control Zenbo Junior II with real-time remote handset

EMPOWERING THE NEXT GENERATION OF WINNERS

Gaming isn't traditionally associated with education. However, the world is changing rapidly – and this burgeoning field of digital entertainment is now a desirable career path for many savvy students. Esports embraces not just competition but content creation and game design, so forward-thinking schools, colleges and universities are establishing gaming centers for students to learn before they earn — and inspire their team spirit.



Laptops



ROG Strix SCAR 18 (G834JY/G834JZ)

- CPU** Up to 13th Gen Intel® Core™ i9-13980HX processor
- GPU** Up to NVIDIA GeForce RTX™ 4090 Laptop GPU
- Tri-Fan Technology & Full-Surround Vents
- N** 18" QHD Nebula Display

Beat the best. break all limits

Dominate your games with up to an Intel® Core™ i9-13980HX processor and up to an NVIDIA® GeForce RTX™ 4090 Laptop GPU with a 175W max TGP. With all new 18" ROG Nebula Display, and a full-surround vents with Tri-Fan Technology, the ROG Strix SCAR 18 is here to win.

- Up to a 13th Gen Intel® Core™ i9-13980HX processor with 24 cores and 32 threads at up to a 65W TDP
- Up to an NVIDIA® GeForce RTX™ 4090 Laptop GPU with a 175W max TGP and a MUX Switch with NVIDIA Advanced Optimus
- Brand new 18-inch Nebula Displays with 16:10 aspect ratio, QHD 240Hz/3ms, and 100% DCI-P3
- Game with confidence thanks to Tri-Fan Technology, full-surround vents, and Conductionaut Extreme liquid metal



ROG Flow X13 (GV302 XA/XU/XV/XI)

- CPU** AMD Ryzen™ 9 7940HS processor
- GPU** up to NVIDIA® GeForce RTX™ 4070 Laptop GPU
- N** Up to QHD 165Hz Nebula Display
- Large 75Wh battery and USB Type-C charging

Built to adapt. Ultra compact.

Game anywhere with the power and portability of the 2023 ROG Flow X13. Game your way with four distinct modes thanks to the fully convertible design. Powered by the latest AMD Ryzen™ 9 7940HS CPU and NVIDIA® GeForce RTX™ 4070 Laptop GPU, the X13 offers immersive gaming experiences with up to a QHD 165Hz Nebula Display.

- The latest AMD Ryzen™ 9 7940HX processor
- Up to an NVIDIA® GeForce RTX™ 4070 Laptop GPU with MUX Switch with NVIDIA Advanced Optimus
- Enjoy silky smooth and immersive gameplay with either QHD 165Hz or FHD 120Hz panel options and an 85% screen-to-body ratio.
- Advanced cooling boosts clock speeds and lowers noise with liquid metal on the CPU, with more exhaust vents and heatsinks than usual in a thin chassis



ROG Zephyrus M16 (GU604VY/VZ/VI)

- CPU** AMD Ryzen™ 9 7940HS processor
- GPU** up to NVIDIA® GeForce RTX™ 4070 Laptop GPU
- Tri-Fan Technology & Full-Surround Vents
- N** QHD 240Hz/3ms Mini LED Nebula HDR™ Display

Transcend your reality

Disappear into the action with a 16:10 Mini LED QHD 240 Hz ROG Nebula HDR™ panel. First 16" laptop with AniMe Matrix™, powered by up to Intel® Core™ i9-13900H processor and up to an NVIDIA® GeForce RTX™ 4090 Laptop GPU with a max TGP 145 W, the M16 ensures you can game with confidence.

- 16:10 aspect ratio, QHD 240Hz/3ms Mini LED display & Pantone® Validation, 100% DCI-P3 & Dolby Vision
- Up to an NVIDIA® GeForce RTX™ 4090 Laptop GPU with 145W max TGP, NVIDIA® Advanced Optimus, and DLSS 3.
- First 16" laptop with AniMe Matrix™, 18,710 CNC milled holes & 1,711 LEDs
- ROG Intelligent Cooling with Tri-Fan Technology and a full-width heatsink

Desktops



GT-AXE16000

Condensed size. Concentrated power.

The ROG G22CH, a small form factor chassis housing top-tier components inside a stylish small form factor case. Featuring up to an Intel Core™ i9-13900KF and up to an NVIDIA® GeForce RTX™ 40 series GPU, the G22CH keeps its cool with a custom liquid cooling solution, packing incredible performance into a 10L chassis.

- Compact 10L design for minimalist aesthetic
- Up to an Intel® Core™ i9-13900KF processor
- Up to an NVIDIA® GeForce RTX™ 40 series GPU
- Airflow-optimized design, air and liquid cooling options



ROG Strix G16CH

Storm the battlefield

Powered by up to an Intel® Core™ i7 processor and up to a GeForce RTX™ 4080 GPU, the Strix G16CH delivers consistently high framerates in all of the latest games. With a new airflow focused front panel that allows for either air cooling or liquid cooling on the CPU with familiar ROG Strix styling, the G16CH is a welcome addition to any gaming setup.

- Redesigned high-airflow focused chassis, minimalist design
- Up to an Intel® Core™ i7-13700KF processor
- Up to an NVIDIA® GeForce RTX™ 40 series GPU
- Opt for a standard CPU cooler or a high performance 240mm AIO cooler

Monitors



ROG Swift 360Hz PG27AQN

World's fastest 1440p esports gaming monitor

The ROG Swift 360Hz PG27AQN is the perfect esports gaming monitor for fast-paced FPS games like VALORANT, Fortnite, Apex Legends, and CS: GO. This QHD (2560 x 1440) display features Ultrafast IPS panel technology that supports up to 360Hz visuals and an NVIDIA® G-SYNC® processor for silky-smooth gameplay with unparalleled realism.

- 27-inch QHD (2560 x 1440) Ultrafast IPS gaming monitor with 360 Hz refresh rate, designed for professional gamers
- NVIDIA® G-SYNC® processor provides smooth, tear-free gaming at up to 360 Hz
- NVIDIA® Reflex Analyzer offers an accurate measurement of system latency
- ASUS Ultrafast IPS technology enables the fastest response time of all 1440p monitors
- Esports dual-mode enables the monitor to resize visuals to the familiar 25-inch diagonal at 1080p or 2368 x 1332



ROG Swift PG279QM

The revolution of esports

ROG Swift PG279QM is the perfect gaming monitor fast-paced action games. This QHD display features a Fast IPS panel with up to a 240 Hz refresh rate, 1ms gray-to-gray (GTG) response time, and NVIDIA Reflex Latency Analyzer, a revolutionary integrated system latency measurement tool.

- 27-inch QHD (2560 x 1440) fast IPS gaming monitor with 240 Hz refresh rate designed for professional gamers
- NVIDIA® G-SYNC® processor provides smooth, tear-free gaming at refresh rates up to 240 Hz
- NVIDIA® Reflex Latency Analyzer gives competitive gamers an accurate measurement of system latency for the first time
- ASUS Fast IPS technology enables a 1 ms response time (GTG) for sharp gaming visuals with high frame rates
- High dynamic range (HDR) technology with DisplayHDR™ 400 certification and DCI-P3 professional color gamut ensures exceptional contrast and color performance



ROG Swift OLED PG27AQDM

The endgame 1440P monitor

Featuring a 27-inch 1440p OLED panel with 240 Hz refresh rate and 0.03 ms gray-to-gray (GTG) response time, the ROG Swift OLED PG27AQDM is one of the fastest and most responsive monitors available. Inside, a large custom heatsink and intelligent voltage optimization reduce the risk of OLED burn-in to ensure OLED longevity.

- 26.5-inch QHD (2560 x 1440) OLED gaming monitor with 240 Hz refresh rate and 0.03 ms response time for immersive gaming
- Highly efficient custom heatsink, plus intelligent voltage optimization for better heat management to reduce the risk of burn-in
- High perceptual 1000 nits peak brightness (3% of the screen with HDR on), 99% DCI-P3 gamut, and Delta E < 2 color difference for astonishing HDR performance
- Optional uniform brightness setting ensures consistent luminance levels
- DisplayWidget Center enables easy OLED and monitor settings adjustments with a mouse
- Two HDMI® 2.0 ports, support for VRR on Xbox Series X and Series S consoles, VRR for PlayStation 5 games that include an unlocked framerate mode

Networkings



GT-AXE16000

GT-AXE16000 quad-band WiFi 6E (802.11ax) gaming router, new 6 GHz band, dual 10G ports, 2.5G WAN port, dual WAN, AiMesh support, VPN Fusion, Triple-level game acceleration and free network security

- World's first quad-band WiFi 6E gaming router – Ultrafast WiFi 6E (802.11ax) quad-band WiFi router boosts speeds up to 16000 Mbps
- New 6 GHz frequency band – Wider channels and higher capacity delivers higher performance, lower latency, and less interference.
- Expanded coverage – The exclusive ASUS RangeBoost Plus improves signal range and overall coverage.
- Flexible AiMesh configuration – Dedicated 5 GHz or 6 GHz backhaul using ASUS AiMesh routers for more flexible device options
- Dual 10G ports – Enjoy up to 10X-faster data-transfer speeds for bandwidth-demanding tasks with two 10 Gbps WAN/LAN ports.
- 2.5G WAN port – 2.5 Gbps port prioritizes all network traffic, and unlocks the full potential of WiFi 6.
- Triple-level game acceleration - Accelerate game traffic every step of the way — from device to game server



RT-AX82U

ASUS RT-AX82U (AX5400) Dual Band WiFi 6 Extensible Gaming Router, Gaming Port, Mobile Game Mode, Aura RGB, P55 Compatible, Included AiProtection Pro Security, Instant Guard, AiMesh Compatible

- Ultrafast WiFi6: Enjoy ultrafast speeds of up to 5400 Mbps with 160 MHz bandwidth support for faster wireless connections
- Mobile Game Mode: Minimize lag and latency for mobile gaming with just a tap on the ASUS Router app
- Commercial-Grade Security Anywhere – Protect your home network with AiProtection Pro, powered by Trend Micro™. And when away from home, ASUS Instant Guard gives you a one-click sharable secure VPN
- Easy Extendable Network – Enjoy seamless roaming with rich, advanced features by adding any AiMesh-compatible router



TUF-AX4200

TUF Gaming AX4200 Dual Band WiFi 6 Gaming Router with Mobile Game Mode, 3 steps port forwarding, 2.5Gbps port, AiMesh for mesh WiFi, AiProtection Pro network security

- Ultrafast WiFi 6 - Enjoy speeds up to 4200 Mbps and 4X network efficiency with OFDMA and 160 MHz channels.
- True Multi-Gigabit wired speeds - Aggregated 2 Gigabit LAN connections, wired 2.5Gbps port and WiFi 6.
- Easy Port Forwarding in 3 Steps - Open NAT makes port forwarding simple, eliminating frustrating and complicated manual configuration.
- ASUS AiMesh Support – Create a flexible, seamless whole-home mesh network with AiMesh-compatible routers.
- Tested Durability and Stable Operation - TUF Gaming AX4200 is built to be durable and undergoes verified testing to ensure reliable, stable operation.

Peripherals



ROG Keris Wireless AimPoint

Unerring accuracy

The lightweight ROG Keris Wireless AimPoint gaming mouse delivers unerring accuracy like never before. With the exclusive ROG AimPoint optical sensor for sensitivity levels of up to 36,000 dpi, lighter form factor and longer battery life to boot.

- Perfect precision: 36,000 dpi ROG AimPoint optical sensor with 650 ips and 50 g acceleration rate, plus 1000 Hz polling rate
- Tri-mode connectivity: Game with RGB on for up to 119 hours with low-latency 2.4 GHz RF, pair up to three devices via Bluetooth® mode, or charge and play with wired USB
- ROG SpeedNova wireless technology: Delivering low-latency, reliable wireless performance and an optimized power solution in the 2.4 GHz RF mode
- Lightweight structure: Updated design with durable inner structure keeps mouse weight down to just 75 grams

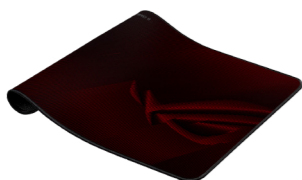


ROG Strix Scope RX

Play at the speed of light

ROG Strix Scope RX features exclusive ROG RX optical mechanical switches, which provide a 100-million keystroke lifespan and offer consistent linear keystrokes with immediate response. Scope RX also offers IP57 waterproof and dust resistance and USB 2.0 passthrough.

- ROG RX optical mechanical switches: Enjoy consistent, wobble-free keystrokes and 100-million-keystroke lifespan
- Light it up with ROG: Per-key RGB LEDs with central lighting for all-round illumination, backlit ROG logo, and customizable light effects
- Built to last: Alloy top cover and IP57 waterproof and dust resistance help ensure long lifespan
- USB 2.0 passthrough: Full-function port for device charging and external storage



ROG Scabbard II

Triple protection for a smooth glide

ROG Scabbard II offers ample space for your keyboard, mouse and other gaming gear. It is made out of durable fabric with a military-grade nano-coating that repels water, oil and dust, giving you an optimal mouse gliding surface.

- Military grade protective nano coating provides a water-, oil- and dust-repellent surface, and ensures a smooth mouse-glide
- Anti-fray, flat-stitched edges
- Narrow-stitch frame design ensures long-lasting durability and neater aesthetic



ROG Delta S

Dominate with superior sound

ROG Delta S gaming headset features a hi-fi-grade ESS 9281 Quad DAC with MQA support for impeccable audio and an ASUS AI Noise-Canceling Microphone for clear communication. At only 300 grams, it ensures comfort with ergonomic D-shaped ear cushions, and USB-C and USB-A connectors bring multi-platform compatibility.

- Industry-leading hi-fi ESS 9281 Quad DAC, plus MQA support for impeccably detailed audio
- ASUS AI Noise-Canceling Microphone offers crystal-clear in-game voice communication
- Customizable, multi-color RGB lighting and unique Soundwave Light mode let you shine in style
- Lightweight 300-gram design with ergonomic, fast-cooling D-shaped ear cushions ensure a perfect fit

ExpertWiFi



ExpertWiFi EBM68

Your Business WiFi Expert Within Reach

The ASUS ExpertWiFi EBM68 provides a fast, secure, and scalable network with rich features tailored for small-to-mid-sized businesses. Whether used independently or extended with other ASUS ExpertWiFi solutions, the ExpertWiFi EBM68 can easily adapt to your business network needs.

- High-efficiency WiFi 6 – Ultrafast WiFi 6 tri-band boosts speeds up to 7,800 Mbps, with 160 MHz channels for better efficiency and throughput
- Separate and Secure Usage – Up to five SSIDs to separate and prioritize devices for different business scenarios.
- Customizable Guest Portal – Customize the SSID, portal type, brand name and templates to fit your business style
- Expandable WiFi Coverage – ExpertWiFi provides up to 12 mesh node connections to expand your business network with AiMesh features.
- Enterprise-grade Network Security – Receive a free subscription to ASUS AiProtection Pro and safe browsing features to secure your WiFi environment.
- Easy management – The all-in-one ASUS ExpertWiFi app provides easy setup and hassle-free management of your WiFi network.



ExpertWiFi EBA63

Your Business WiFi Expert Within Reach

EBA63 Dual-Band WiFi 6 access point, suitable for all businesses, supports AiMesh-compatible models, PoE powered and easy management app.

- Seamless and Extendable Connections — Enjoy uninterrupted roaming with WiFi 6 speeds of up to 3000 Mbps, support for up to 100 active devices and easy scalability to meet the evolving needs of your business network.
- Secure and Segmented Networking – Easy WiFi network settings via Self-defined Networks, and enhanced business security with VLAN support, offering up to five SSIDs for device segregation and prioritization in diverse business scenarios.
- Flexible Deployment with PoE — Support for both Power over Ethernet (PoE) connection and AC adapters, providing versatile options for installation.
- Accommodate to Any Space — Supports ceiling and wall mounting to fit into various business environments with more flexibility.
- Built for Safety and Reliability — Compliant with IEC 60601-1-2 standards and leveraging UL94 5VB fire-resistant materials*, the EBA63 ensures a stable and reliable connection.



ExpertWiFi EBP15

Your Business WiFi Expert Within Reach

5-Port GbE Smart Managed PoE+ Switch, with 4 PoE+ Port, 60w, supports AiMesh-compatible models, suitable for all businesses, commercial-grade network security and easy management app

- Power over Ethernet - With 4 PoE+ ports capable of delivering up to 60W of power, this device offers a convenient solution for powering various PoE-enabled devices.
- VLAN for easy device management - Each of the Ethernet ports can be assigned to a VLAN that provides additional security for your business.
- QoS for fluent network experience - Enjoy dedicated bandwidth priority based on Quality of Service traffic management to get a better delivery of mission-critical traffic such as voice and video. No delay anymore!
- IGMP snooping for multicast optimization - Ensures a better network experience, especially for the video streaming or audio conferencing, by optimizing multimedia traffic delivery.
- Work with ExpertWiFi system for managing more conveniently - Since EBP15 is compatible with the ExpertWiFi system, you can control the devices connected to EBP15 by managing the main router*. More convenient!

* Only the top half of the EBA63 is constructed using UL94 5VB fire-resistant plastic material.
**The main router should be ASUS ExpertWiFi Series and compatible routers



All 2021 ASUS Education PCs and onwards will be tested according to the demanding MIL-STD 810H military-grade standard to ensure maximum reliability and durability.



ALWAYS RELIABLE

QUALITY THAT EXCEEDS INDUSTRY STANDARDS

Teachers, students and parents demand higher quality and greater reliability, so all ASUS Education PCs undergo rigorous quality testing to much higher standards than mainstream models. They offer proven reliability in all aspects and are extraordinarily tough, meeting and even exceeding industry durability standards – including the exacting U.S. MIL-STD-810H military-grade specifications.

TRUSTWORTHY PERFORMANCE - DURABLE AND RELIABLE

US Military Grade Test



Shock Test

Withstand 18 harsh shocks at the speed of 40G/11ms with power on



Vibration Test

Withstand 10-500Hz physical vibrations for 60 min



Altitude Test

Handle extreme 15,000-ft heights with power on



Humidity Test

Handle extreme 15,000-ft heights, with power on



High Temperature Test

Endure 32°C~49°C for 3 x 24 hr. cycles with power on



Low Temperature Test

Endure -37°C~ -46°C for 3 x 24 hr. cycles with power on

ASUS Quality Test



Drop Test

Survives a single 120 cm accidental drop on its base, onto a concrete floor.



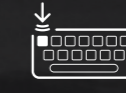
Hinge Test

Up to 50,000 open/close cycles to simulate, replicating usage of 12 times per day for over 11 years' typical use.



Spill-Resistance Test

Tests resistance to small water spills of up to 66 cc¹.



Keyboard Durability Test

Up to a 10,000,000 keystroke lifespan²



Port Durability Test

Mimics a user connecting a USB Type-A device 5,000 times, or 5 times a day for over 2.5 years.



Panel Pressure Test

Display can survive a simulated weight of up to 30 kg of aircraft luggage on the lid without breaking³.

1. The key part of the keyboard only. 2. Test data for the normal keys only. 3. The test area is 3 cm in diameter. The testing regime includes the requirements of both military-grade standards and ASUS quality tests, and varies depending on device. MIL-STD-810 testing is conducted on selected ASUS products only. Note that the MIL-STD-810 testing helps to ensure the quality of ASUS products but does not indicate a particular fitness for military use. The test is performed under laboratory conditions. Any damage caused by attempts to replicate these test conditions would be considered accidental, and would not be covered by the standard ASUS warranty. Additional coverage is available with ASUS Premium Care.

SOFTWARE

Unlock limitless learning with ASUS software

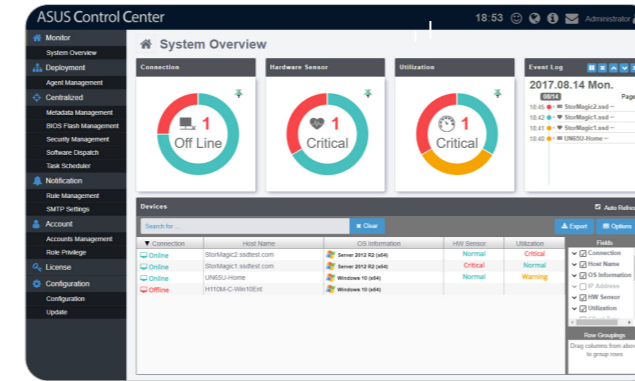
ASUS software simplifies asset-management processes for IT staff, as well as for students and educators.



ASUS Control Center

Comprehensive centralized IT management

ASUS Control Center is a centralized IT management suite designed to enhance productivity and security by offering a comprehensive set of controls via a user-friendly interface.

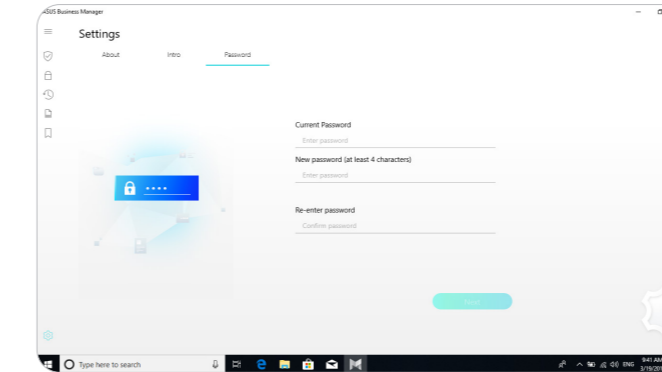


- HARDWARE & SOFTWARE MONITORING
- ADVANCE SEARCH AND GROUPING
- TASK SCHEDULER
- EFFICIENT ENERGY CONTROL
- ENHANCE SECURITY
- INTUITIVE USER INTERFACE

ASUS Business Manager

Simple PC management

ASUS Business Manager is a PC-based platform consisting of hardware and firmware that provides unique security and productivity capabilities for educators and students.

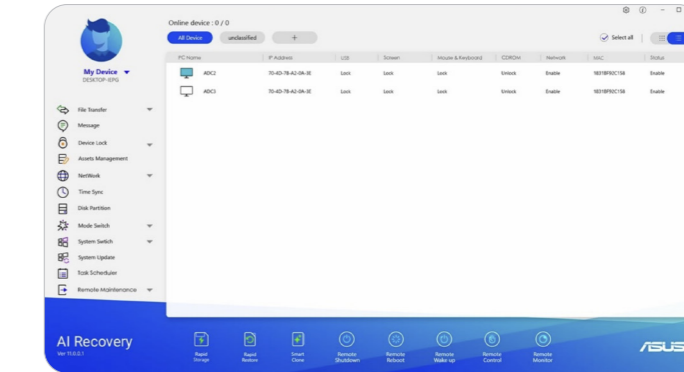


- SYSTEM BACKTRACK
- FILE SHREDDER
- MY LOGO
- DEVICE LOCK
- SECURE DRIVE
- SYSTEM RESTRICTION

AI Recovery

Build quality learning spaces

AI Recovery is software that helps IT administrators create e-classrooms and allows for easy deployment, set-up and recovery of all devices.



MyASUS

One-stop portal of ASUS-developed software tools and services

MyASUS is an exclusive app that helps you easily communicate with customer service, monitor repair status and access product instruction manuals, among other capabilities.

ASUS Cloud

Ultimate online resource management

ASUS Cloud is a platform that integrates with multiple learning applications, providing rich and active learning experiences for students while making class management easier for educators. It also allows students and educators to store and access all their learning materials, making sharing as effortless as ever.

ENTERPRISE GRADE SECURITY

Modern IT threats can strike learning environments from any place and at any time. Security needs to cover every entry point with multiple layers of protection, so ASUS Education PCs provide total security using multiple hardware and software layers, ranging from physical hardware protection to identity security to protect your data from unauthorized access. ASUS also offers a series of asset-management solutions for IT managers.



IT Management

It allows Management Information System (MIS) staff to remotely control and manage company assets, making sure all digital data is safe and sound



Intel vPro®

The intel vPro platform support hardware-based data encryption at the file, folder, and drive levels. Accelerate encryption and protect keys directly within the hardware.



ASUS Control Center

A centralized IT management software that supports Windows® Active Directory authentication, registry editor and USB storage disabling, to ensure that all data and information is controlled and secured.



AI Security

MIS can enable/disable external USB devices or optical drives writing or reading data to restrict user's access right to get confidential data or reduce virus infection.

Identity Security

Identity security protection helps prevent attacks by hackers looking to capture passwords and encryption keys for sensitive data



Fingerprint Sensor

The fingerprint sensor lets you use Windows Hello technology to quickly and securely login with just a touch.



BIOS / HDD Password

The HDD password protects all data stored on the hard disk, keeping the data safe from being read or overwritten by unauthorized users.



Trusted Platform Module (TPM2.0)

A TPM chip securely stores the authentication information (such as passwords or encryption keys) used by software to protect important data and transactions.

Hardware Protection

Hardware-based protection ensures robust physical security for your PCs and notebooks



Kensington Security Slot & Padlock

The Kensington type locks are useful to prevent quick grab-and-run thefts of equipment from casually supervised locations.



Chassis Intrusion Alert

The chassis intrusion alert would show on BIOS during next boot once your PC case had been opened.

ASUS PREMIUM CARE SERVICES

Hassle free, peace of mind for Education.

Asus premium care services go beyond standard warranty, to provide the assurance of maximum protection with minimal effort. It's the peace of mind you need so that you can get things done without compromising productivity or mobility.



MINIMISED
DOWNTIME



INCREASED
EFFICIENCY



REDUCED
COSTS



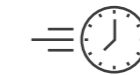
Comprehensive Support

Nobody knows your devices better than our own Asus hardware experts do. That is why they are only a phone call away to help you get the best out of your devices and assist you when you need support from troubleshooting, diagnostics and more.



Warranty Extensions

Keep that peace of mind feeling going for up to 5 years¹, with an Asus extended warranty². Ideal if you are planning to deploy your products for a longer period.



Next Business Day (NBD) Repair

Minimise disruptions by investing in NBD service. Eliminate the hassle of laptop drop offs and pick-ups.



Laptop Accidental Damage Protection (ADP)

ADP gives you the assurance that should your laptop be subject to accidental damage from events such as liquid spills, electrical surges, drops and falls, you will be covered, with no excess to pay.



Keep My Drive

In the unlikely event that the original storage drive requires replacement, Keep My Drive allows you to retain the defective drive and receive a replacement, installed by an authorised Asus technician.



Battery Back Up

Extend the warranty of your battery to match the warranty of the laptop with Battery Back Up. You will be entitled to one battery replacement during the warranty period, as a result of any manufacturing defects.

¹ Service and warranty coverage may vary depending on country and territory and may change without notice.

² Please check with your supplier for exact offers.

^{**}Must be purchased and activated within 90 days of your ASUS product purchase date.



Jill Wood, Headteacher



LITTLE LONDON CASE STUDY

ASUS was thrilled to work with and supply ASUS C202 Chromebooks to Little London Primary School in Leeds on this truly inspiring project. The Schools mission was to supply a Chromebook to every pupil in the School and to enable them to use a device both at School and also at home. Before the students received the ASUS Chromebooks, very few had access to a computer or Internet access.

Tell us a little bit about yourself and your school

My name is Jill Wood and I am the Head teacher of Little London, a three form entry primary school situated right in the heart of Leeds. A wonderful area to work but an area with lots of challenges. We have a very diverse population here at Little London with over 82 languages spoken across the school and wonderful parents who want the best for their children.

What were your main motivations in sourcing a new IT solution?

We have been trying to increase our digital ability across the school, to make sure technology was playing the right sort of part in our students' education. We were also uncomfortable with the fact that the children were only accessing technology on their set timetabled lessons so we wanted to see technology becoming a part of their everyday learning, whilst in school as well as at home.

What did you do to find the right device/supplier?

We had a long conversation with our IT support in school, a wonderful company called Next Generation IT. We expressed our thoughts around implementing a solution to the school and they took that all away and ultimately suggested the ASUS C202 Chromebook. What swayed us on this decision was that this device seemed to be very robust, with a simplified operating system for the students as well as it being sustainable for the next few years without a need to refresh the device.

What has been the initial feedback from students and teachers?

The children were incredibly excited and they love the fact that they can take the device home and continue learning when not at school. Teachers have also been really positive about the Chromebooks and they have seen a massive increase in work from many of our children.

How has this new solution impacted your school?

The implementation of the Chromebooks has been a real positive for the school, we have seen those who wrote very little in books now writing a lot on their Chromebook, which is great to see. Everything is very secure on the devices so there is no risk of the children accessing all parts of internet and the children are now finding learning fun! So we feel all our children, all of our children are now part of the future.

WHY ASUS

INCREDIBLE ASUS STORIES

ASUS is passionate about technology and driven by innovation. We dream, we dare, and we strive to create an effortless and joyful digital life for everyone.

We're always in search of incredible ideas and experiences, and we aspire to deliver the incredible in everything we do.

69,602 AWARDS WON SINCE 2001


Since 2001, ASUS has earned a total of 57,156 awards from some of the most prestigious international organizations and media groups around the world. Each award is a testament to our relentless quest and commitment to creating solutions designed for everyone to joy.

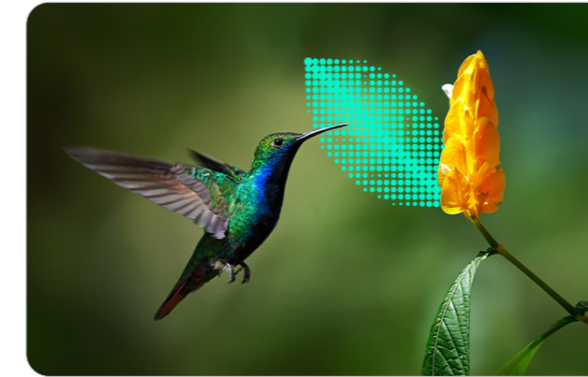


SUSTAINING AN INCREDIBLE FUTURE

ASUS Education Series merges the ASUS Design Thinking ethos with the latest sustainability technology to foster a circular future, achieving multiple internationally recognized environmental certifications. By embracing our goal to achieve net-zero, ASUS Education Series creates minimum waste and maximum efficiency — ensuring the best quality for consumers and an ever-reducing impact on the environment.



 Sustaining an incredible future



NET-ZERO

We collaborate with stakeholders across the value chain to target a Net-zero. We do this through increasing energy efficiency, utilizing clean energy and fostering innovation, helping to create a cleaner environment — and mitigating the impact of climate change that affects every life on earth.



RESPONSIBLE

We work together with our business partners to ensure environmental, labor and human-rights responsibility in the supply chain. This raises the standards of our industry as a whole and protects the rights of everyone we touch in our business.



CIRCULAR

We leverage Design Thinking and technological advancement in sustainability to introduce eco-friendly products. This minimizes our impact on the planet and helps make our business more environmentally friendly.



SHARED

We explore innovations in digital inclusion, cross-sector collaborations and sustainable business models that can truly create shared value for all — bringing new technologies, new opportunities and new talents that will benefit the community for generations to come.

Meet the industry's highest environmental certifications

In 2020 alone, ASUS earned 69,965 green certification from some of the most prestigious international organizations around the world.

69,965

Green Certifications



OUR PARTNER

ASUS EDUCATION ECOSYSTEM PARTNER

Pave the way for education with ASUS Ecosystem Partner



ASUS and Microsoft share the goal of empowering every student to reach his or her potential. With Windows Autopilot, IT administrators can quickly transform a new device to one that's classroom-ready, reset existing devices to remove apps, change settings, or access personal files — and they can do all of this remotely. The collaborative and digital Microsoft Whiteboard brings any class to life, allowing members to share ideas in real time. Microsoft Teams for Education plays a vital role in remote communication and class discussions in online classrooms.



ASUS and Google are working together to make learning and collaborating easier. G Suite brings together all the favorite productivity apps of students, including Google Docs™, Google Slides™ and Hangouts™, to keep everyone connected and productive. Google Classroom gives teachers easy-to-use tools to instantly create classes, distribute assignments, provide feedback and monitor student progress. In addition, the automatic updates and multi-layered security offered by Chrome OS keeps data safe.



Equipped with powerful Intel® processors and Wi-Fi-enhancing technology, ASUS devices offer the very best in performance, efficiency and connectivity. ASUS devices powered by Intel provide performance and reliability to empower students with unparalleled learning tools and deliver seamless learning experiences.



Powered by AMD processors, ASUS education devices deliver optimized performance to meet the needs of students and educators alike, empowering students to reach their full potential.



ENDLESS

The goal of Endless OS is to enable people to harness the power of computing, anywhere. ASUS and Endless OS combine hardware and software to make it easy and free to access valuable preloaded resources for students.

FOR MORE INFORMATION ABOUT ASUS EDUCATION SOLUTIONS, PLEASE CONTACT YOUR LOCAL SALES REPRESENTATIVE

REFERENCE ONLY



Tony Hospes
Commercial Business Manager

NSW/ACT
0417 655 544
Tony_Hospes@asus.com



Domenic Torre
Commercial Business Manager

VIC/TAS
0412 660 064
Domenico_Torre@asus.com



Learn More
<https://www.asus.com/business/solutions/education/>



Saeed Royan
Commercial Business Manager

QLD
0409 816 642
Saeed1_Royan@asus.com



Jim Lee
Commercial Business Manager

WA/SAR/NT
0418 261 175
Jim_Lee@asus.com



Tony Hospes

Head of Commercial Team
National
0414 909 608
Leon1_Brumen@asus.com

ASUS Education Series



Download
ASUS Education Solution Guide
<https://www.asus.com/event/brochure/ASUSBusinessEducationSolutionsGuide.pdf>