

Noname manuscript No.
(will be inserted by the editor)

Online Estimation of Discrete, Continuous, and Conditional Joint Densities using Classifier Chains

Michael Geilke · Andreas Karwath · Eibe Frank · Stefan Kramer

the date of receipt and acceptance should be inserted later

Michael Geilke (✉) · Andreas Karwath · Stefan Kramer
Johannes Gutenberg-Universität Mainz, Staudingerweg 9, 55128 Mainz, Germany
E-mail: {geilke,karwath,kramer}@informatik.uni-mainz.de
Phone: +49-6131-39-21058, Fax: +49-6131-39-23534

Eibe Frank
Department of Computer Science, The University of Waikato, Hamilton 3240, New Zealand
E-mail: eibe@cs.waikato.ac.nz

Online Resource 3

We compared $EDO_{CC}(MC)$ with oKDE on five publicly available datasets: letter, electricity, shuttle, covertime, adult. oKDE had problems with the covertime and adult dataset: Either it was not able to complete a single job within twelve hours (covertime) or showed warnings regarding matrix computations (adult).

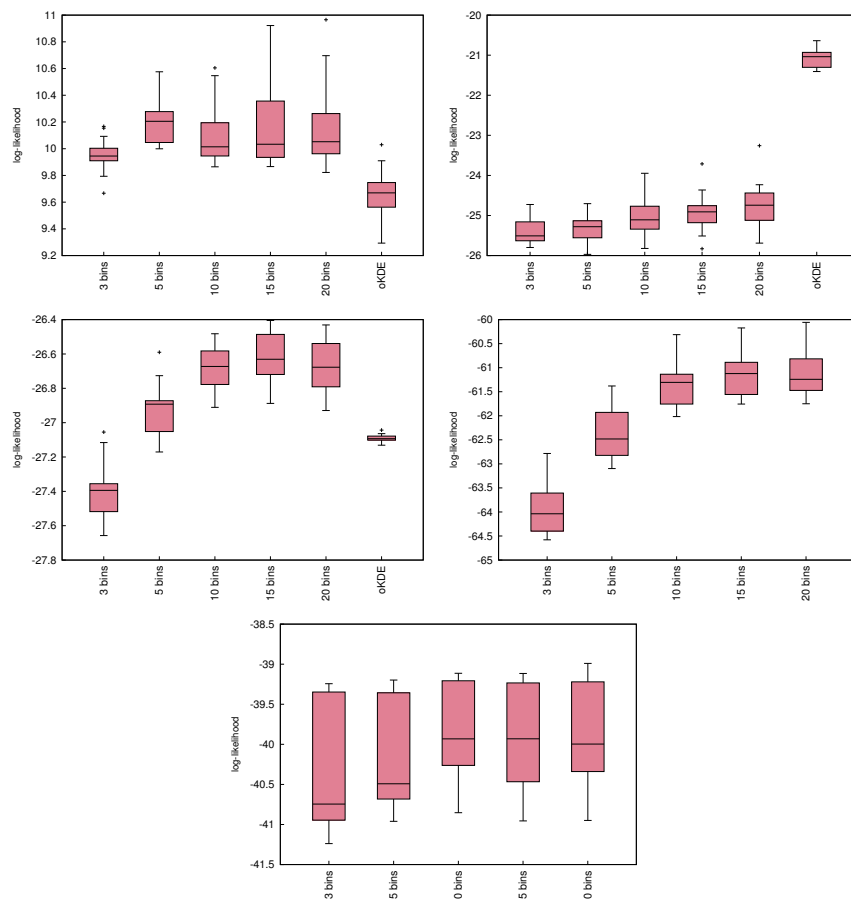


Fig. 1 $EDO_{CC}(MC)$ compared with oKDE on the datasets Electricity (row one, left), Shuttle (row one, right), Letter (row two, left), Covertime (row two, right), and adult (last row). On the y-axis is the average log-likelihood (computed prequentially). i bins with $i \in \{3, 5, 10, 15, 20\}$ stands for the number of bins used for discretizing the class attribute.