



SCIENCE
BASED
TARGETS

DRIVING AMBITIOUS CORPORATE CLIMATE ACTION

GETTING STARTED GUIDE FOR THE SBTi FOREST, LAND AND AGRICULTURE (FLAG) GUIDANCE

Version 1.3

June 2024

ABOUT SBTi

The Science Based Targets initiative (SBTi) is a corporate climate action organization that enables companies and financial institutions worldwide to play their part in combating the climate crisis.

We develop standards, tools and guidance which allow companies to set greenhouse gas (GHG) emissions reductions targets in line with what is needed to keep global heating below catastrophic levels and reach net-zero by 2050 at latest.

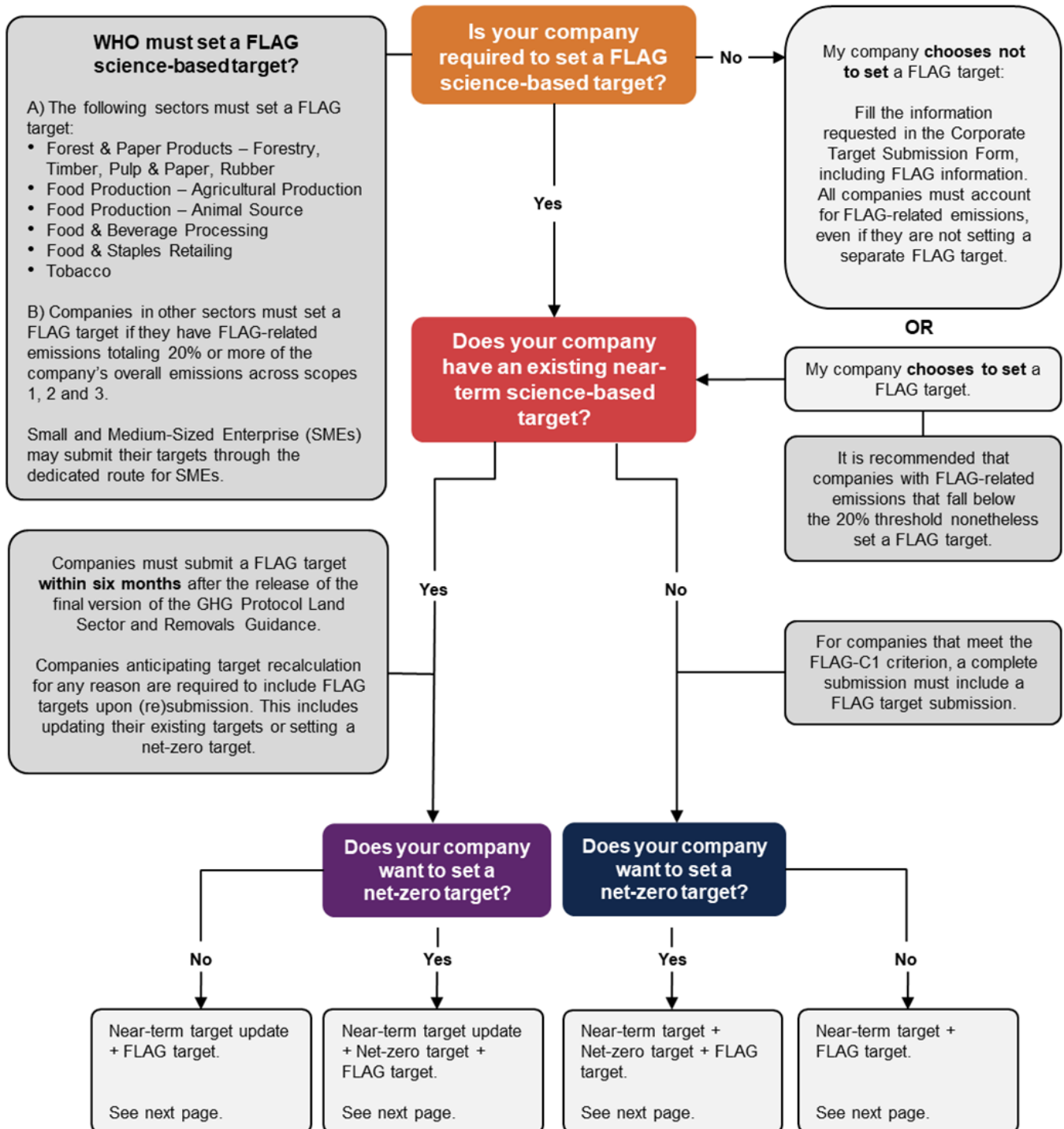
The SBTi is incorporated as a charity, with a subsidiary which will host our target validation services. Our partners are CDP, the United Nations Global Compact, the We Mean Business Coalition, the World Resources Institute (WRI), and the World Wide Fund for Nature (WWF).

VERSION HISTORY

Version	Change/update description	Release date
Version 1.0	<ul style="list-style-type: none">• First version of the document.	March 2023
Version 1.1	<ul style="list-style-type: none">• FLAG implementation timelines updated.	June 2023
Version 1.2	<ul style="list-style-type: none">• Alignment with the updated submission forms.	February 2024
Version 1.3	<ul style="list-style-type: none">• Table on submission information updated.	June 2024

GETTING STARTED GUIDE FOR THE SBTi FLAG GUIDANCE

Use this diagram to determine the submission type your company needs to send to the Science Based Targets initiative (SBTi) to comply with the [SBTi FLAG Guidance](#) requirements.



TARGET VALIDATION DOCUMENTS AND TOOLS TO SUBMIT

WHICH TARGETS ARE YOU SETTING?	DOCUMENTS TO SUBMIT	TOOLS TO SUBMIT
Near-term target update + FLAG target	<ul style="list-style-type: none"> ● Corporate Target Submission Form ● FLAG Annex 	<ul style="list-style-type: none"> ● SBTi Target-Setting Tool ● SBTi FLAG Target-Setting Tool
Near-term target update + Net-zero target + FLAG target	<ul style="list-style-type: none"> ● Corporate Target Submission Form ● FLAG Annex 	<ul style="list-style-type: none"> ● SBTi Target-Setting Tool ● SBTi FLAG Target-Setting Tool ● SBTi Net-Zero Tool
Near-term target + FLAG target	<ul style="list-style-type: none"> ● Corporate Target Submission Form ● FLAG Annex 	<ul style="list-style-type: none"> ● SBTi Target-Setting Tool ● SBTi FLAG Target-Setting Tool
Near-term target + Net-zero target + FLAG target	<ul style="list-style-type: none"> ● Corporate Target Submission Form ● FLAG Annex 	<ul style="list-style-type: none"> ● SBTi Target-Setting Tool ● SBTi FLAG Target-Setting Tool ● SBTi Net-Zero Tool

RESOURCES

To support companies in their FLAG target-setting process, the SBTi has developed a series of resources that companies should carefully consult to ensure they have the latest information on recommendations and requirements.

- [Overview of the SBTi FLAG Guidance.](#)
- [Forest, Land and Agriculture Science-Based Target-Setting Guidance.](#)
- [SBTi FLAG Target-Setting Tool.](#)
- [SBTi Criteria Assessment Indicators](#): Table 7. FLAG Sector Criteria Assessment Table.
- [SBTi FLAG Project FAQs.](#)
- [SBTi FLAG Methods Addendum.](#)
- [SBTi FLAG Public Consultation Summary and Q&A.](#)
- [SBTi FLAG Guidance launch webinar recording.](#)
- [SBTi FLAG target-setting process webinar recording.](#)
- For GHG accounting questions applied to the land sector, please refer to the [Greenhouse Gas Protocol Land Sector and Removals Guidance \(draft version\)](#), which the SBTi follows for all accounting practices.
- For resources on net-zero, please visit the [SBTi Corporate Net-Zero Standard page](#).
- For more information on the SME target validation route and its eligibility, please visit the [SME target-setting process page](#).



SCIENCE
BASED
TARGETS

DRIVING AMBITIOUS CORPORATE CLIMATE ACTION

