

# Enforcement and Compliance History Online ([echo.epa.gov](https://echo.epa.gov))

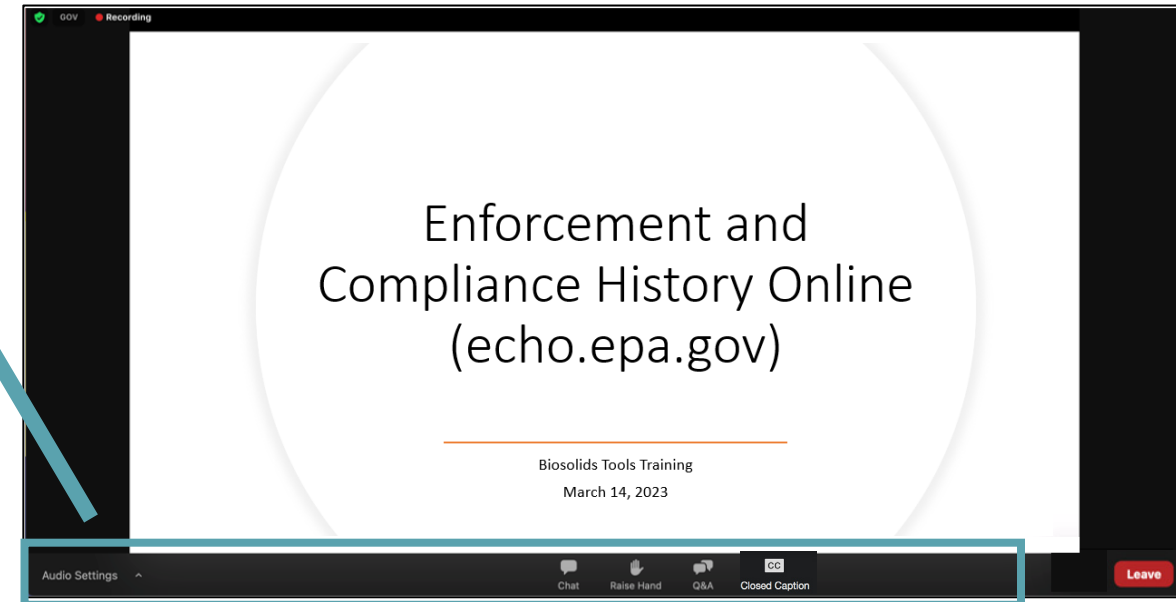
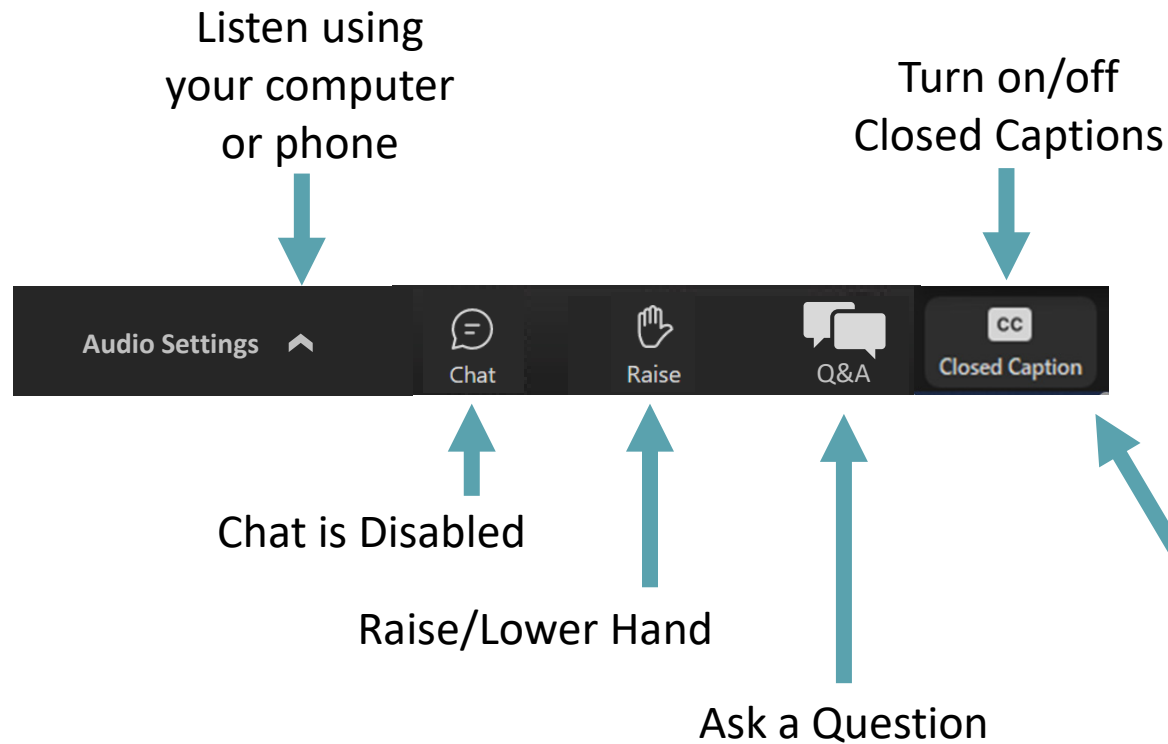
---

Biosolids Tools Training

March 14, 2023

# Webinar Logistics

- All attendees are in listen only mode. Please enter your questions in the Q&A pod and we will be monitoring them throughout the webinar.
- If you wish ask a question verbally, please raise your (virtual) hand and we will respond to those questions at the end of the training.



# Asking Questions

GOV Recording

Overview  
NPDES No  
(NNCR)

March 2023

e Report

Q&A

Welcome to Q&A  
Questions you ask the host and panelists will show up here

I have a question

Send anonymously

Cancel Send

Who can see your questions?

Audio Settings ^

Chat Raise Hand Q&A Leave

Send in your questions anonymously or with your name

Ask your question via the Q&A pod

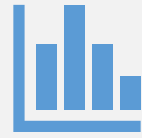
# Enforcement and Compliance History Online ([echo.epa.gov](https://echo.epa.gov))

---

Biosolids Tools Training

March 14, 2023

# Training Goals



Learn about the biosolids data available on ECHO



Learn how to navigate to each of the biosolids tools



Understand the differences between the biosolids tools and key functionality

# Agenda

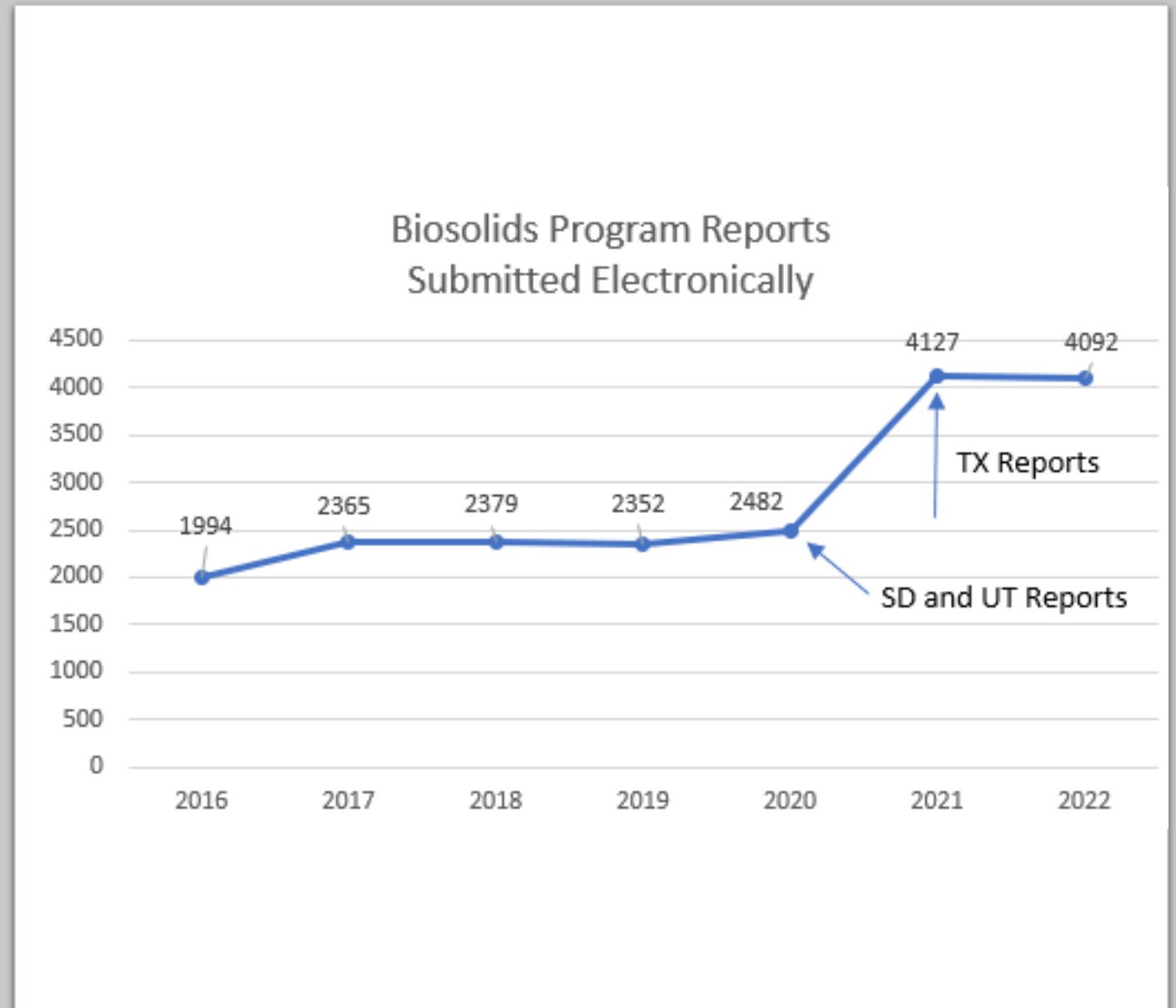
1. Biosolids Program and ECHO
2. ECHO Biosolids Tools and Demonstrations
  - Biosolids Annual Report Search
  - Biosolids Facility Search
  - Biosolids Facility Report
3. Questions

# Biosolids Program

Prior to the implementation of the NPDES eReporting Rule (eRule), biosolids annual reports were submitted on paper with varying data quality. Paper submissions limited the data availability and utility of biosolids data on a national scale.

With the implementation of the eRule, the 2016 biosolids annual reports were required to be submitted electronically in the 41 states where EPA implements the Federal Biosolids Program.

Under eReporting, EPA has received around 2,300 reports each year and had a significant increase in 2021 reports with the inclusion of Texas facilities.





# Phase 2 Biosolids Program Reports

With the NPDES eRule Phase 2 Extension Rule, the Phase 2 biosolids program reports are required to be submitted electronically by December 2025 in the 9 states (AZ, ID, MI, OH, OK, SD, UT, TX, WI) with authorized biosolids programs.

Three authorized states (SD, TX, UT) have opted to use EPA's biosolids electronic reporting application.

- South Dakota and Utah POTWs started filing in February 2021 (~60 reporters)
  - Texas POTWs started filling in September 2021 (~1,600 reporters)
-





# How can ECHO help?

EPA's Enforcement and Compliance History Online (ECHO), which provides integrated compliance and enforcement information for over a million regulated facilities, includes two biosolids search tools and a biosolids facility report.

The tools are available to the public and centralize biosolids program information into easy-to-use search tools.

---

# ECHO Biosolids Tools

1. [Biosolids Annual Report Search](#)
  - Search electronically reported biosolids annual reports (mainly larger POTWs)
2. [Biosolids Facility Search](#)
  - Search biosolids compliance and enforcement data (includes smaller facilities)
3. Biosolids Facility Report
  - View annual report, permit, compliance, and enforcement data for a unique NPDES ID in a single report

# Biosolids Annual Report Search

## Search Media Program

Choose a Media Program: Wastewater/Stormwater/Biosolids (CWA) ▼

Choose a Water Program Area: Biosolids Annual Report ▼

## Annual Report

Facility ID Number:

EPA Region: All Regions ▼

State: All States, AL - Alabama, AK - Alaska

Biosolids Annual Reporter: 2022 ▼

Annual Amount of Biosolids Generated:  No Restrictions  Within

0 - >=15,000 Dry Metric Tons

0 290 1,500 15,000 >=15,000

Biosolids Management Practice Type:



# Biosolids Annual Report Search - Universe

Who is included in the search?

- Facilities that submitted a biosolids annual report electronically for reporting years 2016-2022.
- Each September, an additional year is added to the search.

The annual report data are available close to real-time submission (e.g., data reported on Monday is available in ECHO on Monday).

---



# Biosolids Annual Report Search

## Search Criteria

- Year (required)
- NPDES ID
- EPA Region
- State
- Amount of Biosolids Generated
- Management Practice
- Violation

## View Results

- Link to Biosolids Facility Report
  - Link to help documentation
  - Sort table columns
  - Download table data
-

# Demonstration

---

# Biosolids Facility Search

**Search Type**

Choose a Search Type: Water

Choose a Water Program Area: Biosolids

**Geographic Location**

**Facility Characteristics**

**Enforcement and Compliance**

[View More](#)

Time Since Last Biosolids Inspection

No Restrictions  Never Inspected

Within  None Within

1 Year(s)

Date From: MM/DD/YYYY To: MM/DD/YYYY

By Agency:  Any  EPA  State

Biosolids Inspection Type

- Any Biosolids Inspection
- Any Official Biosolids Inspection
- ADR - Asbestos Demolition and Renovation
- AER - Aerial Photography

Biosolids Violation Origin

No Restrictions  Any Violation Origin



# Biosolids Facility Search - Universe

Who is included in the search?

- NPDES ID has a biosolids permit component,
  - NPDES ID has an "L" as the third character,
  - NPDES ID has NPDES Data Group 04 - Sewage Sludge/Biosolids Annual Program Reports,
  - NPDES ID has a biosolids violation,
  - NPDES ID has a biosolids compliance monitoring activity/inspection, or
  - NPDES ID has a biosolids enforcement action.
-





# Biosolids Facility Search

## Search Criteria

- Biosolids permit data
- Biosolids compliance monitoring activity/inspection
- Biosolids violations
- Biosolids enforcement actions
- Biosolids penalties

## View Results

- Map or table view
  - Customize and sort table columns
  - Download table data
  - Filter on compliance and enforcement data
  - Links to other reports
-

# Demonstration

---





# Biosolids Facility Report - Universe

Who has a report?

- NPDES ID submitted biosolids annual report electronically between 2016-2022,
  - NPDES ID has a biosolids permit component,
  - NPDES ID has an "L" as the third character,
  - NPDES ID has NPDES Data Group 04 - Sewage Sludge/Biosolids Annual Program Reports,
  - NPDES ID has a biosolids violation,
  - NPDES ID has a biosolids compliance monitoring activity/inspection, or
  - NPDES ID has a biosolids action.
-



# Biosolids Facility Report

Integrated biosolids annual report, compliance, and enforcement data for each unique NPDES ID included in the universe. Includes:

- Permit information
- Biosolids annual report summary and detailed data (5 years)
- Compliance monitoring history (5 years)
- Violation history (3 years)
- Enforcement history (5 years)

Caveat: Annual reports submitted before April 2019 will not include pollutant monitoring, copy of record (COR), or attachment data available.

---

# Demonstration

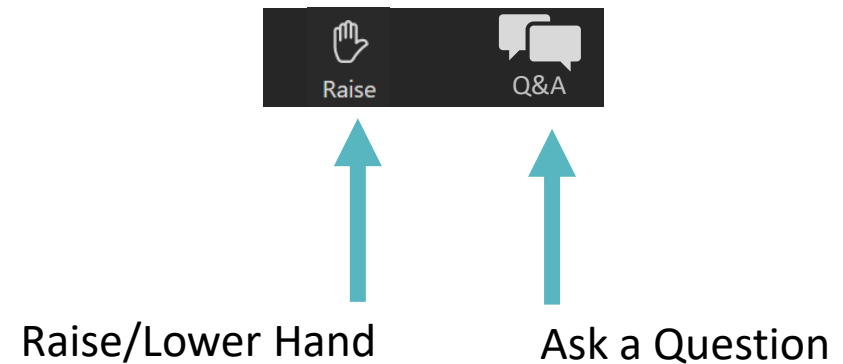
---

Stop Recording



# Q&A Session

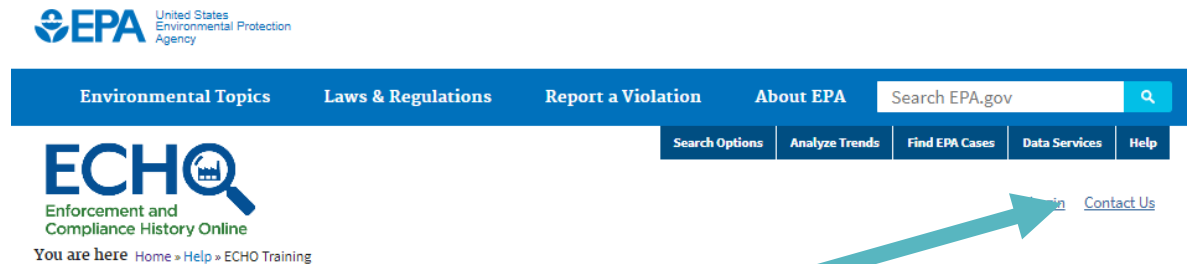
Please enter your questions in the Q&A pod or raise your hand and we will unmute you to ask verbally.





# Other Questions

After today's webinar, questions can be sent to ECHO's [Contact Us](#) link.



“Contact Us” link is available at the top right of every ECHO page

# Thank you for attending today's training!

Slides and training recording will be posted on the ECHO Training (<https://echo.epa.gov/help/training>) page.

A short survey will appear on your screen momentarily, we would really appreciate your feedback.

**OMB Control Number: 2030-0051 Expiration Date: 5/31/24**

*(Pursuant to 5 CFR § 1320.12(b)(2); approval for the current collection is automatically extended on a monthly basis during OMB's review of its renewal.)*

**EPA Burden Statement:**

*"This collection of information is approved by OMB under the Paperwork Reduction Act, 44 U.S.C. 3501 et seq. (OMB Control No. 2010-0042). Responses to this collection of information are voluntary. An agency may not conduct or sponsor, and a person is not required to respond to, a collection of information unless it displays a currently valid OMB control number. The public reporting and recordkeeping burden for this collection of information is estimated to be 4 minutes per response. Send comments on the Agency's need for this information, the accuracy of the provided burden estimates and any suggested methods for minimizing respondent burden to the Regulatory Support Division Director, U.S. Environmental Protection Agency (2821T), 1200 Pennsylvania Ave., NW, Washington, D.C. 20460. Include the OMB control number in any correspondence. Do not send the completed form to this address."*