



IQ Engine 10.5r1

Release Notes

August 2022



Copyright © 2022 Extreme Networks, Inc. All rights reserved.

Legal Notice

Extreme Networks, Inc. reserves the right to make changes in specifications and other information contained in this document and its website without prior notice. The reader should in all cases consult representatives of Extreme Networks to determine whether any such changes have been made.

The hardware, firmware, software or any specifications described or referred to in this document are subject to change without notice.

Trademarks

Extreme Networks and the Extreme Networks logo are trademarks or registered trademarks of Extreme Networks, Inc. in the United States and/or other countries.

All other names (including any product names) mentioned in this document are the property of their respective owners and may be trademarks or registered trademarks of their respective companies/owners.

For additional information on Extreme Networks trademarks, see: www.extremenetworks.com/company/legal/trademarks

Open Source Declarations

Some software files have been licensed under certain open source or third-party licenses.

End-user license agreements and open source declarations can be found at: <https://www.extremenetworks.com/support/policies/open-source-declaration/>



Table of Contents

General Release Information	4
Release Date.....	4
Hardware platforms supported.....	4
Management platforms supported.....	4
New Features	5
Known Issues	6
Addressed Issues	7



General Release Information

Release Date

August 2022

Hardware platforms supported

- AP122
- AP230
- AP1130
- AP150W
- AP550
- AP30
- AP305C/CX
- AP305C-1
- AP302W
- AP510C/CX
- AP410C
- AP410C-1
- AP4000
- AP4000-1
- AP5010
- AC, WiFi6, and WiFi6E models

Management platforms supported

ExtremeCloud IQ 22.4.0.1 and later

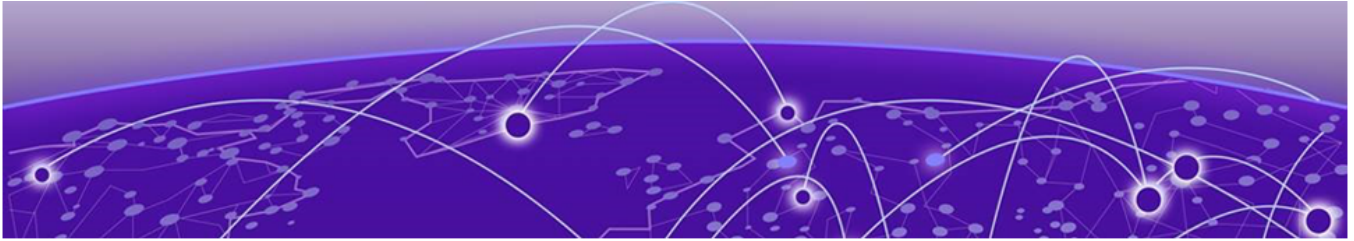


New Features

The release introduces the following features:

Hardware Support: This release supports the new AP5010 and AP 4000-1.

Baudrate changed to 115200 for AP5010: To date, all Access Points Baud rates have been 9600. The 5010 Baud rate has changed to 115200 for console access.



Known Issues

Issue ID	Description
HOS-17683	Some WPA3 clients cannot associate to the AP4000 properly when band steering is enabled. Workaround: Disable band steering.



Addressed Issues

Issue ID	Description
HOS-18135	Android 12 phones failed to connect to PSK SSID (WPA3-SAE) with AP230/AP250.
HOS-18110	Auth application cores were seen on AP4000 when WiFi 6E clients were connecting and disconnecting.
HOS-17931	AP302W crashed in Client mode test.