



## DoD Public Key Enablement (PKE) Quick Reference Guide (QRG)

### Editing Certificate Group Locations for InstallRoot via the GUI

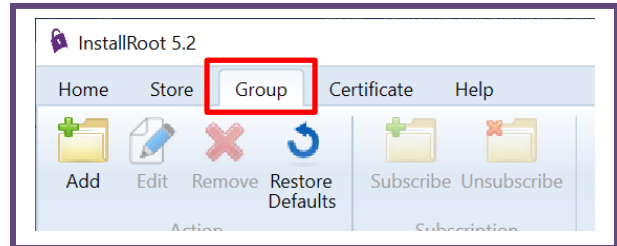
Contact: [dodpke@mail.mil](mailto:dodpke@mail.mil)  
URL: <https://cyber.mil/pki-pke/>

Enabling PKI Technology  
for DoD users

This Quick Reference Guide (QRG) describes how to edit the default InstallRoot certificate group locations using the InstallRoot graphical user interface (GUI).

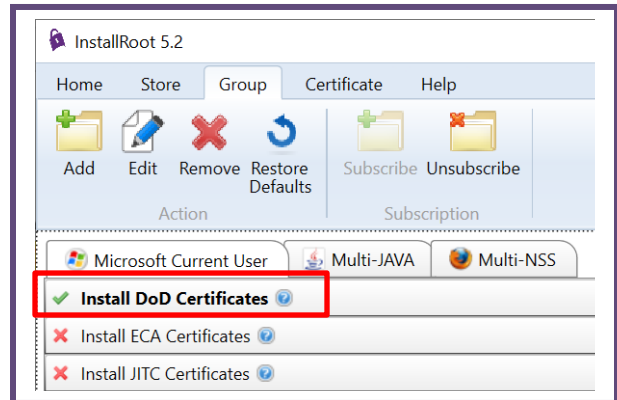
#### Step 1

Launch InstallRoot and select the **Group** tab.



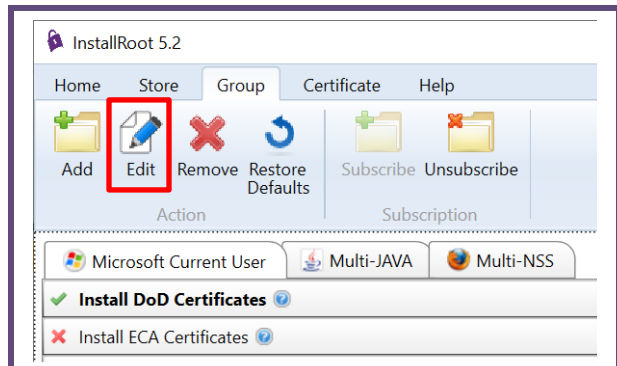
#### Step 2

Select the row for the certificate group to be edited (e.g. DoD Certificates) so that the group name displays in **BOLD**.



#### Step 3

Click the **Edit** button.

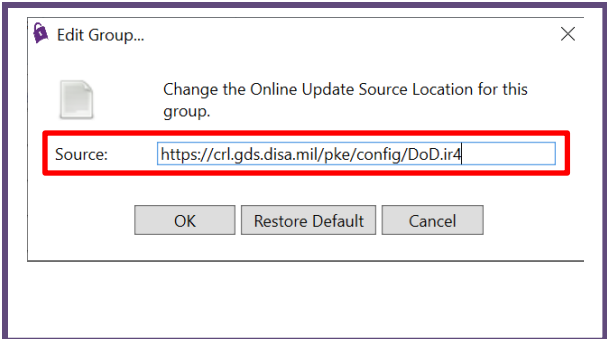


Step 4

In the **Edit Group...** dialogue box that displays, specify the desired location from which to retrieve updates for the group in the **Source** field.

Current DISA-hosted default update locations are:

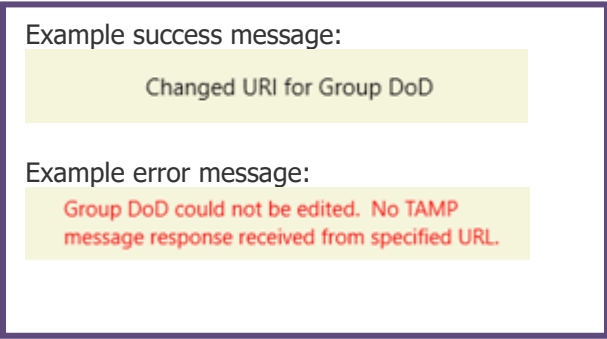
DoD PKI: <https://crl.gds.disa.mil/pke/config/DoD.ir4>  
ECA PKI: <https://crl.gds.disa.mil/pke/config/ECA.ir4>  
JITC PKI: <https://crl.gds.disa.mil/pke/config/JITC.ir4>  
WCF PKI: <https://crl.gds.disa.mil/pke/config/WCF.ir4>



Step 5

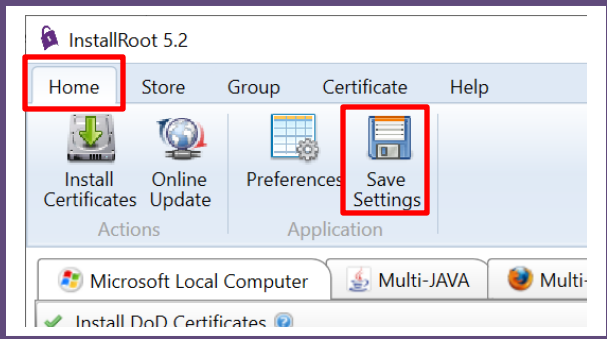
Click **OK** to verify the new URL.

InstallRoot will attempt to access and verify the URL. If there is an error, a message will display and the group URI will remain unchanged.



Step 6

Return to the **Home** tab and click **Save Settings**.



For questions or comments regarding Public Key Enablement (PKE), please contact **dodpke@mail.mil**