



DoD Public Key Enablement (PKE) Quick Reference Guide (QRG)

Editing CRLAutoCache Source Locations

Contact: dodpke@mail.mil
URL: <https://public.cyber.mil/pki-pke/>

Enabling PKI Technology
for DoD users

This Quick Reference Guide (QRG) describes how to edit source location and DNLookupTable URLs used by CRLAutoCache for Windows to fetch and cache CRLs.

Step 1

Launch CRLAutoCache and select the source to be edited from the left pane.

In the **Location** dialogue box in the right pane, specify the new desired location from which to retrieve updates for this source and click **Save**.

Repeat this step for each source to be updated.

Current DISA-hosted default update locations are:

DoD PKI:

https://crl.gds.disa.mil/pke/config/dod_crlgps.html

ECA PKI:

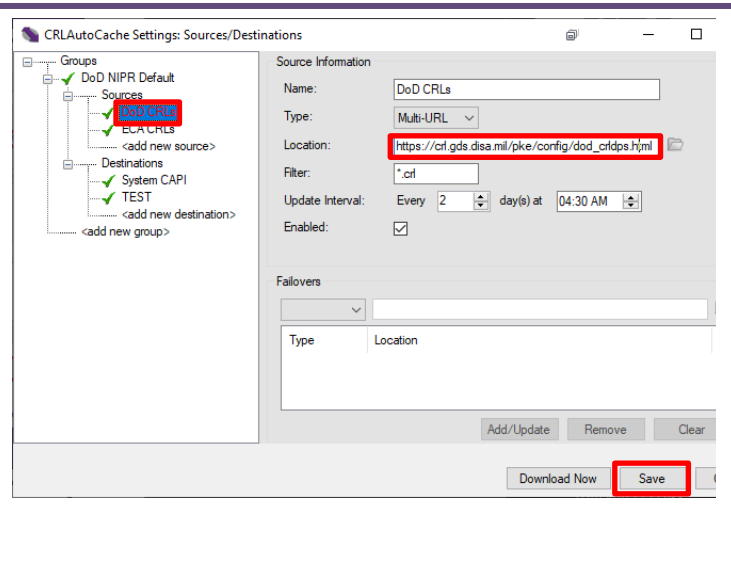
https://crl.gds.disa.mil/pke/config/eca_crlgps.html

JITC PKI:

https://crl.gds.disa.mil/pke/config/jitc_crlgps.html

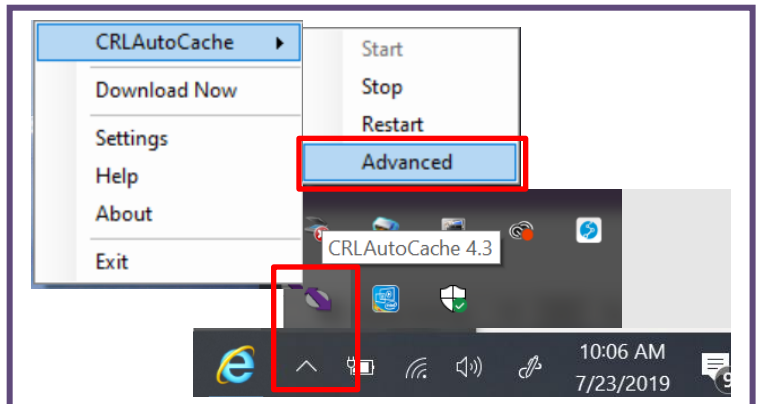
Federal PKI:

https://crl.gds.disa.mil/pke/config/federal_crlgps.html



Step 2

Now locate the CRLAutoCache icon in the system tray. Right click on the icon and select **CRLAutoCache > Advanced**.



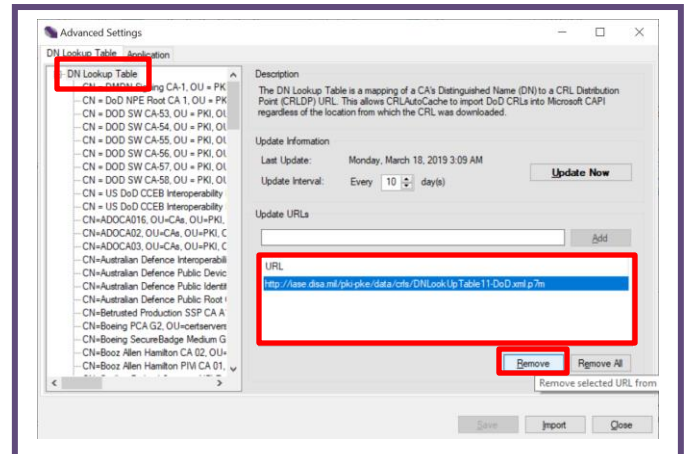
Continued on page 2

UNCLASSIFIED

Step 3

Select the top **DN Lookup Table** node and review the **Update URLs** list in the right pane.

Remove any `ibase.disa.mil` and `ibasecontent.disa.mil` URLs by highlighting these URLs and clicking the **Remove** button.



Step 4

Add a URL for each PKI configured in CRLAutoCache by entering the URL into the **Update URLs** field and clicking the **Add** button. Once all URLs have been entered, click **Save**.

Current DISA-hosted default update locations are:

DoD/ECA PKIs:

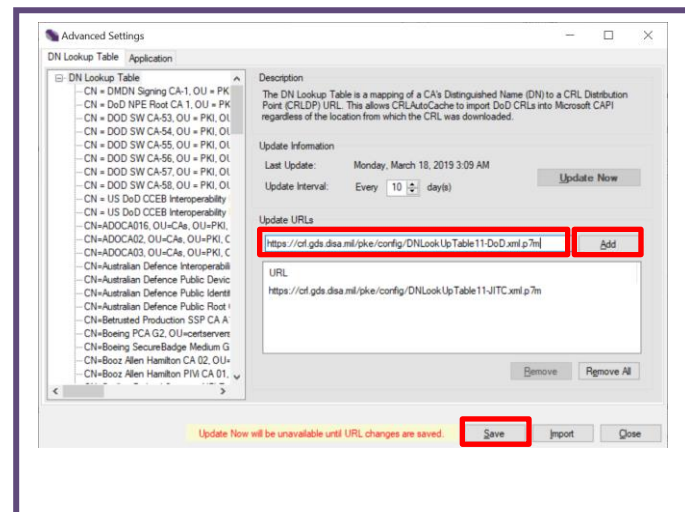
<https://crl.gds.disa.mil/pke/config/DNLookupTable11-DoD.xml.p7m>

Approved External PKIs:

<https://crl.gds.disa.mil/pke/config/DNLookupTable11-FBPartners.xml.p7m>

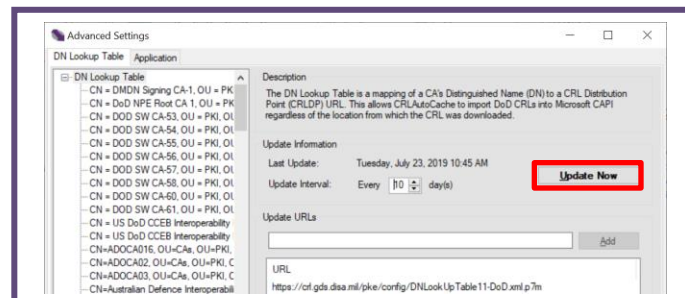
JITC PKI:

<https://crl.gds.disa.mil/pke/config/DNLookupTable11-JITC.xml.p7m>



Step 5

Click the **Update Now** button to test DN Lookup Table retrieval from the new URLs and review the results message for errors. Click **Close** to close out of the Advanced Settings when complete.



For questions or comments regarding Public Key Enablement (PKE), please contact

dodpke@mail.mil