

IBM Verify Identity Protection

Reduce identity risk like never before—identify blind spots, threats and infrastructure issues



Highlights

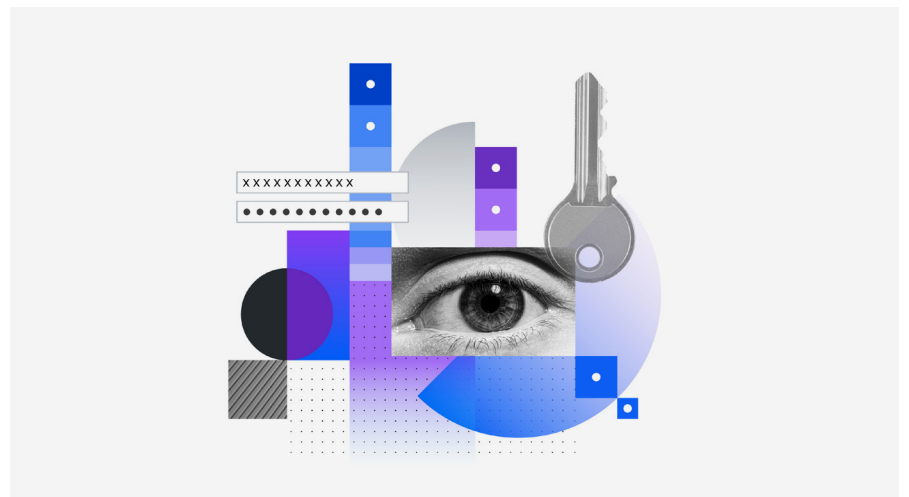
Eliminate identity blind spots

Detect identity-based threats

Eradicate identity sprawl and complexity

The IBM® X-Force® Threat Intelligence Index 2024 validated what many of us in the industry already knew: identity has become the leading attack vector. The report showed a 71% year-over-year increase in cyberattacks that used stolen or compromised credentials.¹ Organizations are just as likely to have a valid identity used in a cyberattack as they are to see a phishing attack, despite significant investments in infrastructure security and identity and access management (IAM) solutions. Hackers don't hack in; they log in.

IBM Verify Identity Protection helps organizations quickly and efficiently identify and remediate identity posture issues and threats. Gain full visibility into access activity for all identities—both human or machine—and all applications and deployment models, including multicloud, SaaS and on premises, across the entire identity fabric. This visibility also includes cloud identity providers (IdPs), on-premises or hybrid directories, multifactor authentication (MFA) and single sign-on (SSO), and privileged access management (PAM) platforms. IBM combines end-to-end identity security posture management (ISPM) functionality and near real-time identity threat detection and response (ITDR) for unparalleled protection.



↑ 71%

year-over-year increase in
cyberattacks that used stolen
or compromised credentials

Eliminate identity blind spots

Verify Identity Protection helps secure your identity and access infrastructure with innovative ISPM capabilities that enable the remediation of identity-related blind spots and misconfigurations. IBM also accelerates the resolution of common identity operations issues, such as troubleshooting locked accounts. This proactive approach to ISPM helps ensure your identity infrastructure's continuous protection and seamless operation.

Detect identity-based attacks

Verify Identity Protection also offers comprehensive ITDR capabilities, providing a robust solution for detecting identity-specific threats, such as attacks against your identity infrastructure and unauthorized identity activity. IBM helps make threat teams more effective by bringing full identity context to incident investigation and response. This includes who's attacking you or how they're accessing your assets and from where, including deep insights into the underlying exposures.

Eradicate identity sprawl and complexity

With IBM, identity and threat teams can operate at high speed so that organizations can take full advantage of cloud services and SaaS solutions without introducing identity-related security risks. Deployed as a SaaS platform, Verify Identity Protection uses patented Identity Access Flow Graph technology to correlate identity events, network flow traffic and cloud flow traffic and provide full, near real-time visibility into all identities and assets and their related access flows.

IBM's ITDR and ISPM combined solution is incredibly quick and simple to install and set up. Unlike other solutions that require agents, IBM can protect all your identities and identity fabric by using logs in your security information and event management (SIEM) or deploying IBM log collectors. Verify Identity Protection helps deliver quick time to value with visibility into identity activities in the first hours after deployment.

You can use Verify Identity Protection to:

- Improve the security posture of the identity stack
- Resolve identity operation issues faster
- Detect and respond to identity threats
- Enable identity-first zero trust
- Simplify cloud migration



Conclusion

Verify Identity Protection is an identity-first security solution that protects an organization's identity infrastructure and detects identity-based threats in near real-time, helping organizations move faster without introducing identity-related security risks. With Verify Identity Protection, organizations gain robust ISPM and ITDR capabilities for in-depth defense against identity-based attacks. Through deep visibility into the activities of identities as they access cloud services, SaaS platforms and on-premises assets, Verify Identity Protection is one of the few solutions that provides full identity and access context for quick remediation of identity threats and posture issues.

For more information

To learn more about IBM Verify Identity Protection, contact your IBM representative or IBM Business Partner, or visit ibm.com/products/verify-identity-protection.

1. IBM X-Force Threat Intelligence Index 2024,
IBM Security, February 2024.

© Copyright IBM Corporation 2024

IBM Corporation
New Orchard Road
Armonk, NY 10504

Produced in the
United States of America
June 2024

IBM, the IBM logo, and X-Force are trademarks or registered trademarks of International Business Machines Corporation, in the United States and/or other countries. Other product and service names might be trademarks of IBM or other companies. A current list of IBM trademarks is available on ibm.com/trademark.

This document is current as of the initial date of publication and may be changed by IBM at any time. Not all offerings are available in every country in which IBM operates.

Statement of Good Security Practices: No IT system or product should be considered completely secure, and no single product, service or security measure can be completely effective in preventing improper use or access. IBM does not warrant that any systems, products or services are immune from, or will make your enterprise immune from, the malicious or illegal conduct of any party.

THE INFORMATION IN THIS DOCUMENT IS PROVIDED "AS IS" WITHOUT ANY WARRANTY, EXPRESS OR IMPLIED, INCLUDING WITHOUT ANY WARRANTIES OF MERCHANTABILITY, FITNESS FOR A PARTICULAR PURPOSE AND ANY WARRANTY OR CONDITION OF NON-INFRINGEMENT.

IBM products are warranted according to the terms and conditions of the agreements under which they are provided.

