

The Ænigmatic Addenda:

Guest Constructors revisit the Adalogical Ænigmas

No. 12: Mr Serkan Yürekli revisits Ænigma #9

Gentle solver,

For the twelfth *Addendum* in our series, we are privileged to receive the work of Mr Serkan Yürekli from Istanbul, Turkey. Mr Yürekli is the former chief editor of the logic-puzzle magazine *Akıllı Oyunları* and the author of many puzzle books. He is perhaps best known as the inventor of the popular logic-puzzle type known as “Tapa.” Among other venues, his work can be found at gmpuzzles.com and yureklis.wordpress.com.

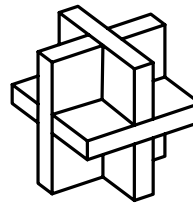
The grid below is to be partitioned along the lines into a set of *regions*, each containing exactly *one* of the black or white dots. Every square must participate in some region.

The shape of every region must be *rotationally symmetric* around its included dot. That is, if you were to rotate the region 180° around its dot, its shape would be unchanged.

Once you’ve completed your division of the grid, you can move on to finding the final answer to this Ænigma. Fill each region with the same colour as the dot it includes: regions with black dots should be darkened, and those with white dots left uncoloured. After having done so, the resulting picture will yield a clue to your final answer.

Good luck!

Ada



Pavel's Puzzles

High-quality mechanical and logic puzzles, direct from the designer!

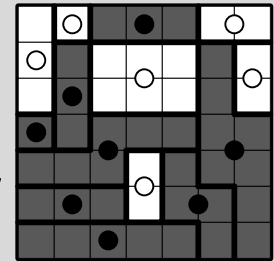
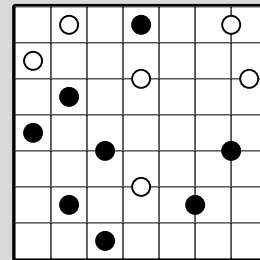
<http://www.pavelspuzzles.com>

Help support the Adalogical Ænigmas:

www.patreon.com/aenigmas

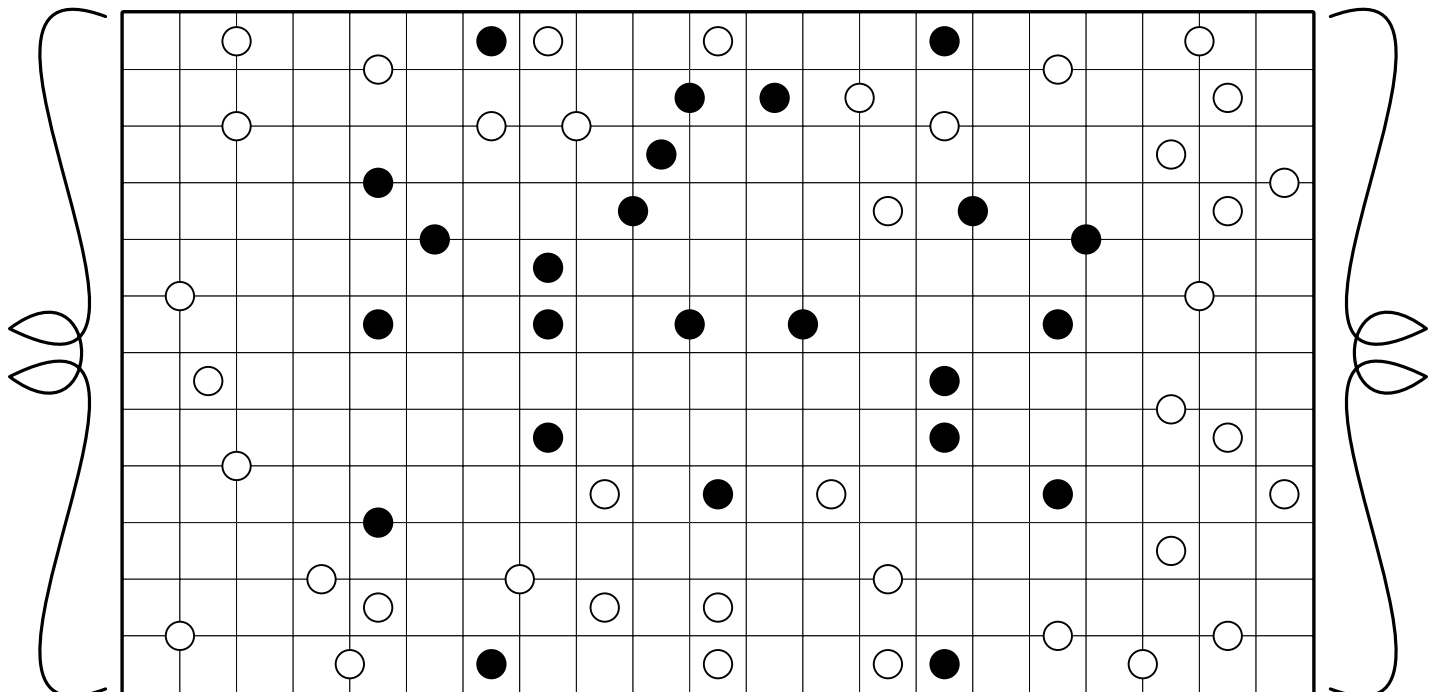


Example



Answer:
LOCK

Need assistance with this Ænigma? Hints and other help are available at www.pavelspuzzles.com/aenigmas/addenda/12



Send your answer to aenigma@pavelspuzzles.com by 9/14/2018 for a chance to win a **free physical puzzle** from Pavel's Puzzles! Full details are at www.pavelspuzzles.com/aenigmas/addenda/12.